

402 9025 Highland Court, Burnaby

\$559,000



Situated at the top of Burnaby Mountain close to the University area, this bright, modern 2-bed, 2-bath home is surrounded by beautiful nature whilst only a short walk to the SFU campus and all the amenities it has to offer. The interior layout is well designed, with open concept kitchen featuring stainless steel appliances and granite countertops, as well as a private balcony perfectly-positioned for enjoying the west-facing views and amazing sunsets. University Highlands Elementary School, childcare centre, public transit and shopping are all very nearby. Parking stall and storage unit included. Available to view from May 10th, be sure to check out our video tour and book your appointment now!

KEY INFORMATION

MLS® R2578490

Residential Attached

Simon Fraser University

2 Bedrooms

2 Bathrooms

831 SF

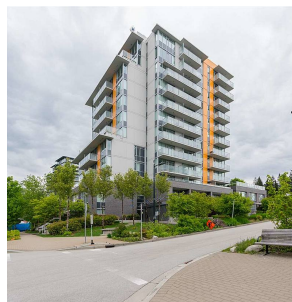
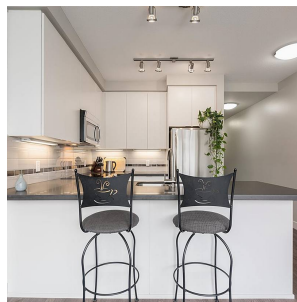
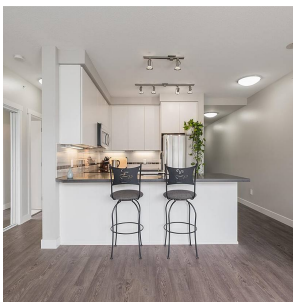
\$480.54 Maintenance Fees

FEATURES

Year Built: 2013

Views: TREES & MOUNTAINS

Listed By: rennie & associates realty ltd.



Ryan O'Hearn PREC*
778.384.2667
rohearn@rennie.com
rennie.com/ryanohearn



Jane Chu PREC*
778.886.3303
janechu@rennie.com
rennie.com/janechu

rennie