

1601 1833 Crowe Street, Vancouver

\$1,799,000



Located in the heart of False Creek, this PENTHOUSE SUITE is the finest this building has to offer. The 300 sq. ft amazing TERRACE is the perfect spot to enjoy DRAMATIC CLOSE UP VIEWS of Vancouver's skyline, watch the rowers of False Creek, the North Shore mountains and gaze at the iconic Burrard bridge. Inside a sleek contemporary 3 bedroom or 2bm & OFFICE finished with composite STONE COUNTERTOPS, stainless steel appliances and floor-to-ceiling windows centered around the HUGE PATIO. Adjacent to Olympic Village & an easy walk to the Canada Line. The convenience of city centre living including the shops & services of W Broadway & Cambie Streets & Granville Island. The Foundry is a LEED SILVER building, Pets & Rentals allowed, 2 parking, gym and garden area. Book your appointment now!

KEY INFORMATION

MLS® R2579155

Residential Attached

False Creek

3 Bedrooms

2 Bathrooms

1,359 SF

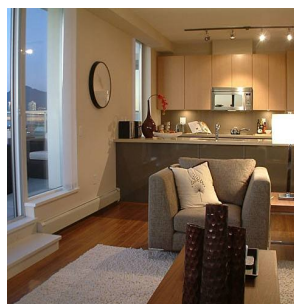
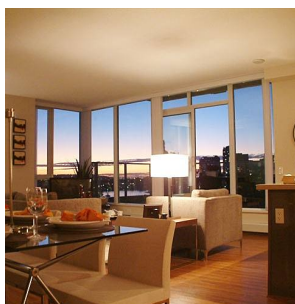
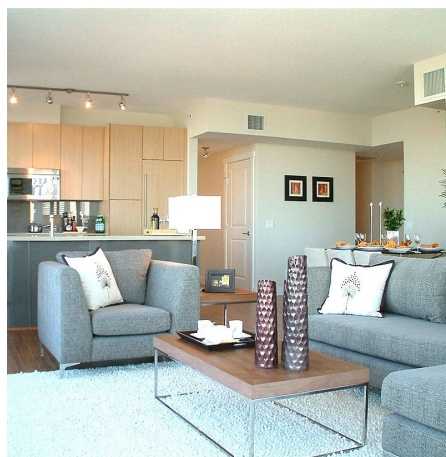
\$804.25 Maintenance Fees

FEATURES

Year Built: 2009

Views: False Creek, City, Mountains

Listed By: Oakwyn Realty Ltd.



rennie