

8 32160 Peardonville Road, Abbotsford

\$719,900



CORNER UNIT! Welcome to Pegasus Lane by Blue David. A limited boutique collection of 3bed & 3Bed + Den townhomes in Central Abbotsford. The development consists of three buildings backing onto an elementary school and connects you to a growing and vibrant community just steps from your favourite restaurants, shopping, grocery, parks and schools. Ranging from 1400 to 1600 sqft, all units feature a double Side by Side garage, 9' ceilings throughout the main level, designer-selected lighting package, chef-inspired gourmet kitchen, & large sundecks for outdoor living and large bay windows. By appointment only. MOVE-IN WINTER 2021.

KEY INFORMATION

MLS® R2577893

Residential Attached

Abbotsford West

3 Bedrooms

3 Bathrooms

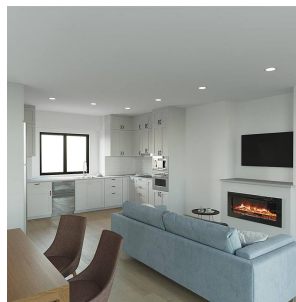
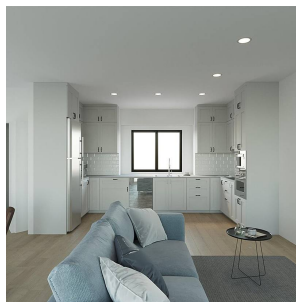
1,411 SF

FEATURES

Year Built: 2021

Views: MOUNTAIN AND SCHOOL

Listed By: Royal LePage Global Force Realty



rennie