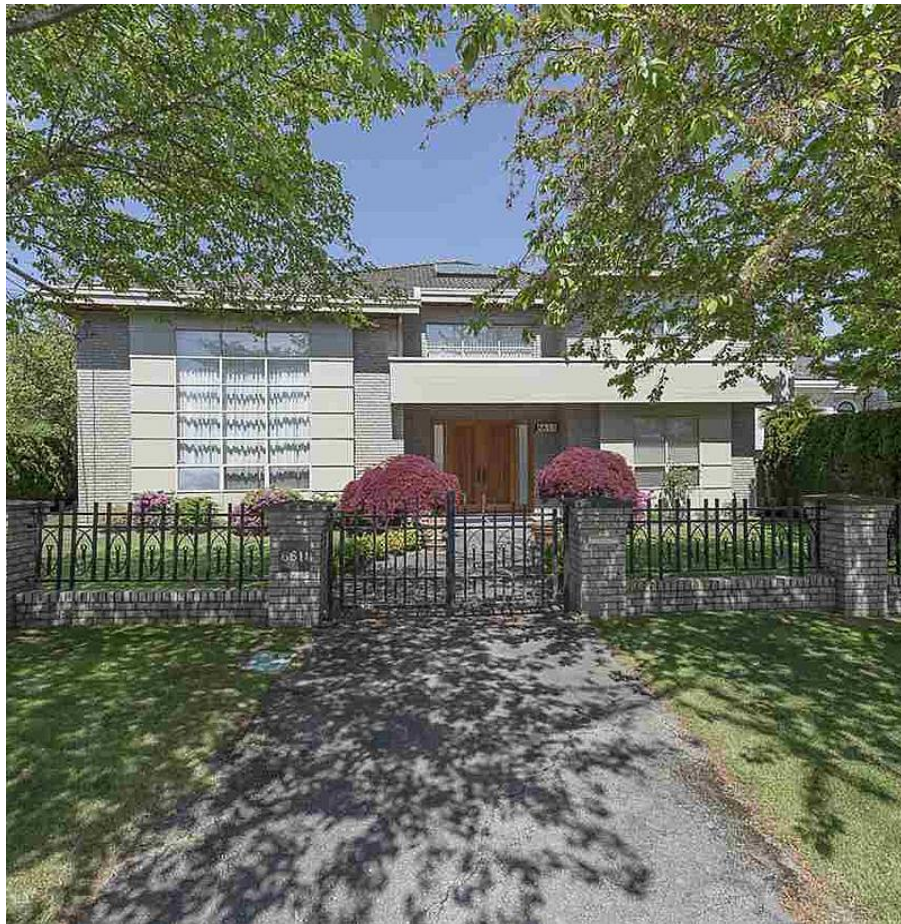


6611 Woodward's Road, Richmond

\$2,888,000



Large Corner lot size of 71x143 in prestigious Woodward's area. Quiet and beautiful neighborhood close to Park Line park. Cozy and spacious 5 bedrooms, 2 den and 4.5 bathroom home. Include: high ceiling in living & Entry, hardwood floors, granite counter, 2 kitchens, 4 air conditioning units, HRV air exchange, 3 car garage, private back yard with sprinkler system all on a sunny South facing lot! School catchment: Steveston London Secondary school. Absolutely charming! A must to see!

KEY INFORMATION

MLS® R2580125

Residential Detached

Woodwards

5 Bedrooms

5 Bathrooms

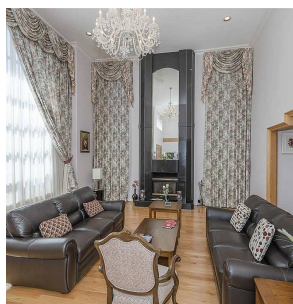
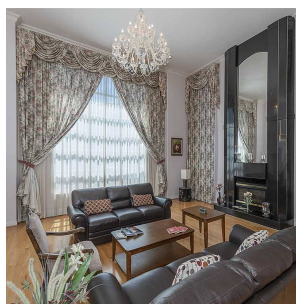
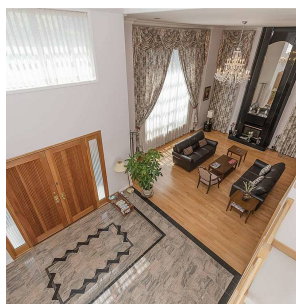
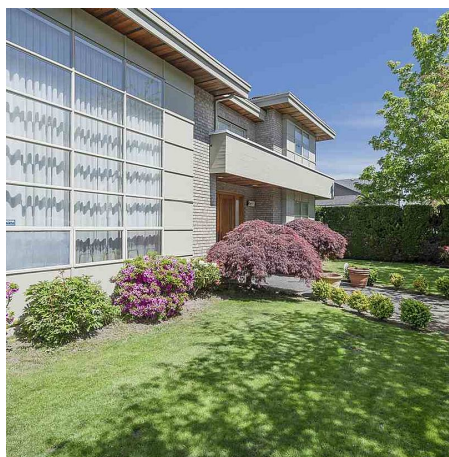
4,292 SF

10,155 SF Lot

FEATURES

Year Built: 1995

Listed By: Multiple Realty Ltd.



rennie