

# 518 3080 Gladwin Road, Abbotsford

\$535,000



WOW! PENTHOUSE AT HUDSONS LOFT. Amazing views from both floors of this impressive 2 level unit. The 5th floor level features your kitchen, living room, den & powder room with a comfortable deck with Mt Baker view to South East. Above you'll find your Master Bedroom, 2nd bedroom & 4 pc bath w ensuite door to master. Both levels have entrance doors & can be reached by elevator for easy access & moving requirements. 2 parking stalls & 1 storage locker round out the desirable home with extensive local amenities just steps outside your door, Several Restaurants, a pharmacy, medical professionals, groceries near by & quick access to public transit, schools, walking trails, Abbotsford Hospital, City Hall & commuter routes, all in the heart of Abbotsford. Have your realtor book and appointment!

## KEY INFORMATION

MLS® R2578372

Residential Attached

Central Abbotsford

2 Bedrooms

2 Bathrooms

724 SF

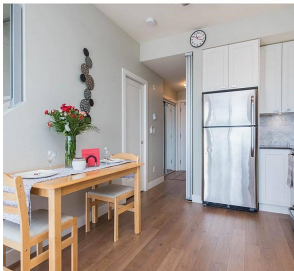
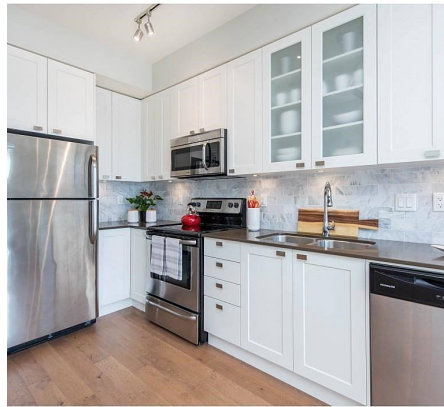
\$272.63 Maintenance Fees

## FEATURES

Year Built: 2015

Views: Mt Baker, mountains, greenbelt

Listed By: Vybe Realty



rennie