

12 16511 Watson Drive, Surrey

\$849,500



Beautiful 3 level townhome located in central Fleetwood. This 3 bedroom and 3 bathroom townhome is spacious & well designed. The property features a beautifully finished kitchen with quartz countertops, stainless steel appliances with gas range, spacious living room, 2 piece powder room on the main floor, high-velocity HRV fan system, tankless hot water, huge rooftop patios with gorgeous view, oversized Low-E glass windows and double car garage has a house feeling. Rentals allowed and pet allowed with restrictions. Prime location, Just a short distance to both level schools, park and transit. Easy to Show. Mask and Gloves are mandatory.

KEY INFORMATION

MLS® R2580551

Residential Attached

Fleetwood Tynehead

3 Bedrooms

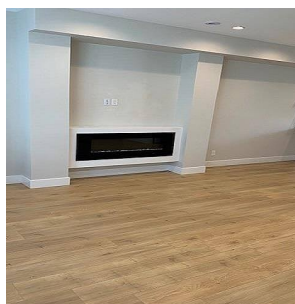
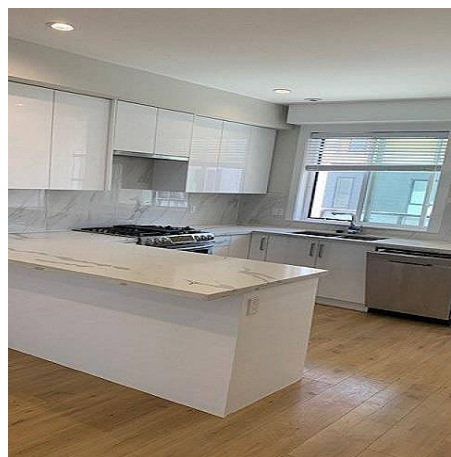
3 Bathrooms

1,548 SF

FEATURES

Year Built: 2020

Listed By: Century 21 Coastal Realty Ltd.



rennie