

5 32828 Landeau Place, Abbotsford

\$524,900



Welcome to the Court Living. This spacious one-bedroom plus den Loft is located in the heart of Abbotsford. This loft features 956 sq ft with the main living on the upper floor & flex space, powder room on the lower level. This apartment also features a 337 sq ft outdoor area with private street access to the home and direct access to underground parking. This apartment comes with two secured parking stalls, a storage locker, and a secured resident bicycle room.

KEY INFORMATION

MLS® R2581109

Residential Attached

Central Abbotsford

1 Bedroom

2 Bathrooms

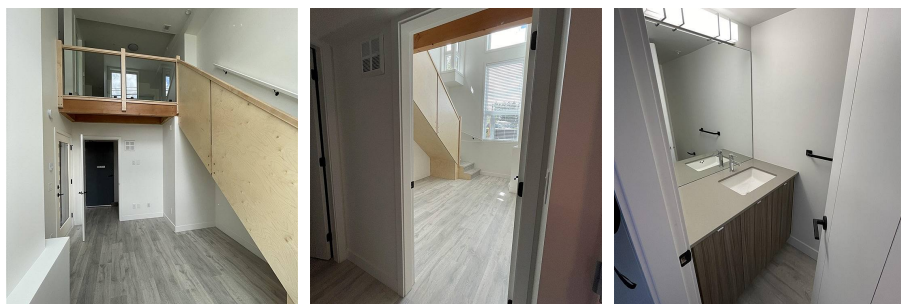
956 SF

\$300.57 Maintenance Fees

FEATURES

Year Built: 2021

Listed By: Royal LePage Global Force Realty



rennie