

2501 58 Keefer Place, Vancouver

\$849,900



Amazing PANORAMIC VIEWS from the North Shore Mountains to False Creek! Your HIGH UP Southeast facing 2 bedroom + Den/Pantry has the ideal floorplan with no wasted space, separated bedrooms and a HUGE Master Bedroom perfect for a King Size Bed & a walk in closet. Upgrades include wide plank engineered hardwood flooring, built in cabinetry & a full size washer & dryer. Firenze is a fully equipped bldg with 25 meter swimming pool, jacuzzi, steam room & concierge. Sought after location in the heart of Vancouver located next to Andy Livingstone Park, Crosstown elementary school, steps to Cineplex cinema, skytrain, T&T Supermarket, restaurants and Rogers Arena. Short Term rentals allowed. BONUS 2 PARKING STALLS, locker and bike rack included. This home is easy to show and priced to sell.

KEY INFORMATION

MLS® R2581710

Residential Attached

Downtown

2 Bedrooms

2 Bathrooms

895 SF

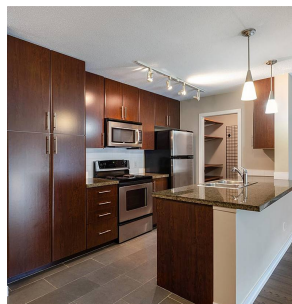
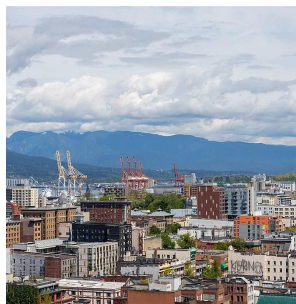
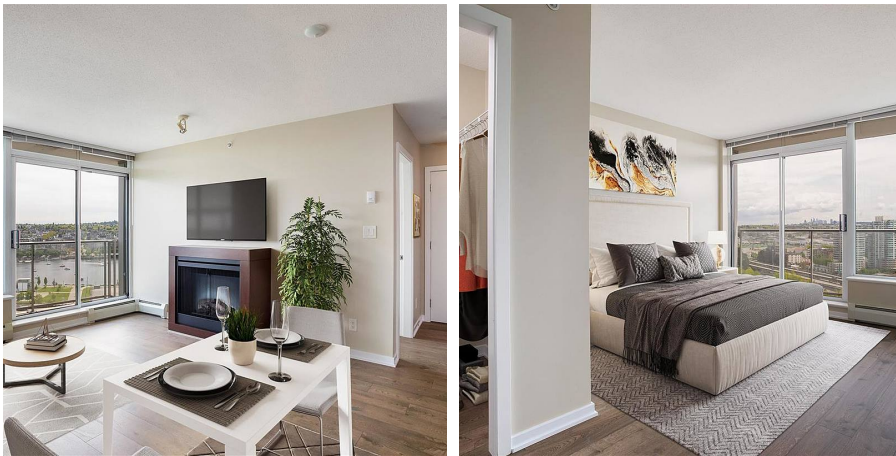
\$507.23 Maintenance Fees

FEATURES

Year Built: 2007

Views: CITY, PARK, WATER & MTN VIEWS

Listed By: rennie & associates realty ltd.



Derek Kai PREC*
604.868.1666
dkai@rennie.com
rennie.com/derekkai

rennie