

1502 1188 Pinetree Way, Coquitlam

\$499,900



M3, Symbolic building in Heart of Coquitlam center. Quality built by renowned Cressey Development. Practical floorplan. Famous "Cressey" kitchen w full-size pull-out pantry/4-door fridge/built-in oven/MW, loads of cupboards, quartz countertop, wine cellar, Walk-in closet, 1 parking/1 locker. Quiet SW corner, beautiful sunset/mountain/city views. Unique Summit Club on top 47/48 floor w/ 360 degree panoramic views of mountains/water/Mt. Baker/Bridge, modern lounge/gym/yoga/music rm. Stroll to Lafarge Lake and picturesque neighbourhood. Walk to Skytrain/shoppings/restaurants/aquatic center/Douglas College/community center/schools/city hall/library,etc. Superb convenient. Great to live-in or to invest.

KEY INFORMATION

MLS® R2581910

Residential Attached

North Coquitlam

1 Bedroom

1 Bathroom

580 SF

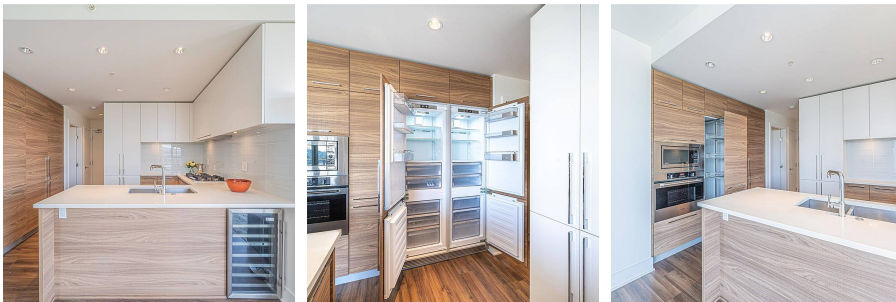
\$207.56 Maintenance Fees

FEATURES

Year Built: 2016

Views: MOUNTAIN/CITY

Listed By: rennie & associates realty ltd.



Calvin Jiang
604.961.1698
cjiang@rennie.com
rennie.com/calvinjiang

rennie