

1004 280 Ross Drive, New Westminster

\$699,999



Welcome to The Carlyle, located in the community of Victoria Hills, New Westminster. This beautiful South-East unit located on a convenient 10th floor has stunning mountain, river, and city views that can be enjoyed from a 160 sqft covered balcony not included in the floor area square footage. This home offers 2 large bedrooms with 2 full bathrooms, an open concept living/dining area, tall ceilings, and oversized windows with loads of natural light. Amenities include a terrace, gym, and clubhouse. Central location to Surrey, Delta, Burnaby, Coquitlam, and Vancouver. Walking distance to Queens Park, restaurants, and transit. Property is rented and generates great cashflow for investors.

KEY INFORMATION

MLS® R2581974

Residential Attached

Fraserview

2 Bedrooms

2 Bathrooms

996 SF

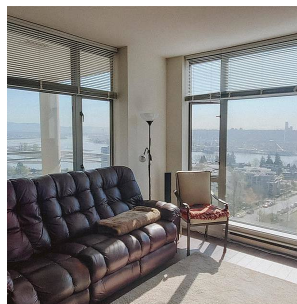
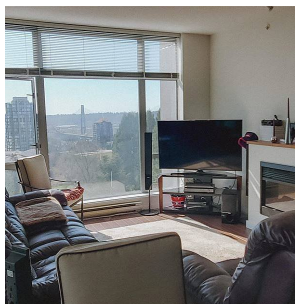
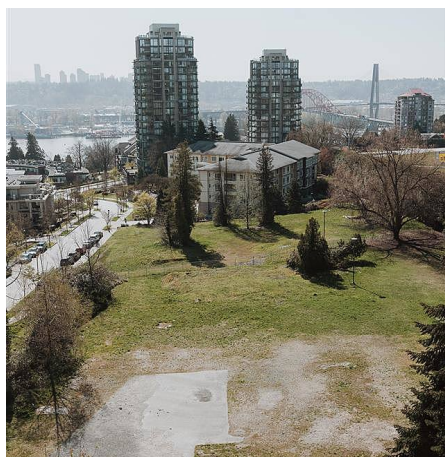
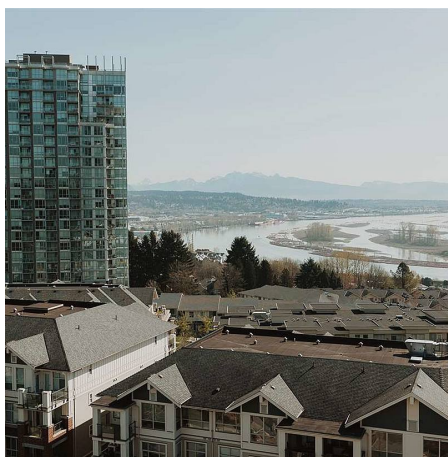
\$410.74 Maintenance Fees

FEATURES

Year Built: 2010

Views: MOUNTAIN, CITY AND RIVER VIEW

Listed By: Century 21 AAA Realty Inc.



rennie