

**16677 30a Avenue, Surrey**

**\$2,850,000**



Custom built by Woodcrest Homes this luxurious home is **SIMPLY** stunning. Completely customized on a 10,482 sqft North Shore Mountain View property. Built with entertaining in mind, the main floor boasts a living, dining, & family room with soaring ceilings, opens onto the epoxy pebble covered deck, **DIVINE** Kitchen finished with thermador appliances and paneled fridge, quartz counter tops and quartz slab backsplash. Also feature Viemann Instant hot water system, 4 Bedrooms up, with walk in closets including the incredible Master Suit, Lower level features a gym, theater room, 2 bedroom Legal Suite. Close to Pacific Heights Elementary, Grandview Heights Secondary, Southridge School. Morgan Creek & Grandview Shops and restaurants.

#### KEY INFORMATION

MLS® R2582401

Residential Detached

Grandview Surrey

6 Bedrooms

6 Bathrooms

5,273 SF

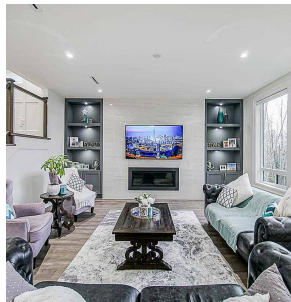
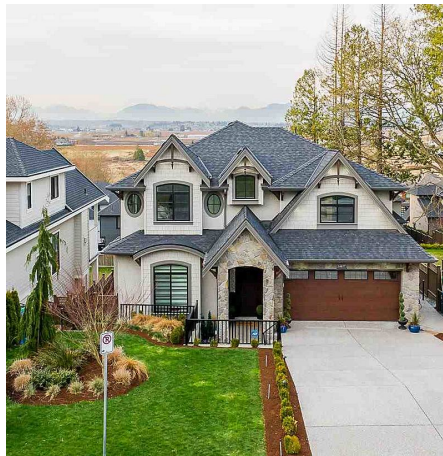
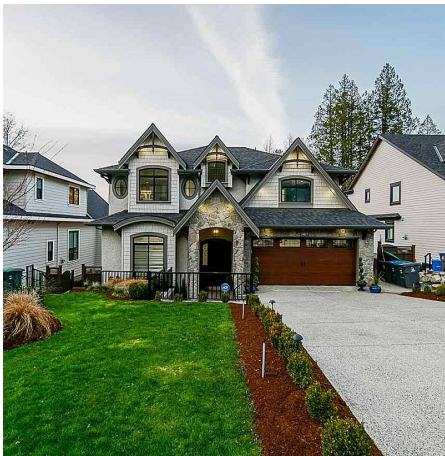
10,482 SF Lot

#### FEATURES

Year Built: 2019

Views: Mountain View

Listed By: RE/MAX Blueprint Realty



**rennie**