

1206 9188 Hemlock Drive, Richmond

\$719,000



Beautiful and bright 2 bed 2 bath room unit with an amazing split bedrooms layout for maximum privacy plus no building or unit looking directly inside! Located in a very convenient location in Richmond with minutes walk to multiple parks including the famous Garden City Community Park perfect for outdoor lovers with a basketball court, a walking trail, a playground, bike park and off-leash dog park there's bound to be something to do everyday! School catchments are Henry Anderson Elementary School and MacNeill Secondary School. Shops and restaurants are also abundant with just a few minute drive, you can get to Central at Garden City, Richmond Centre, Lansdowne and so much more. Amenities include an indoor pool, recreation center, sauna/steam room and hot tub!

KEY INFORMATION

MLS® R2582010

Residential Attached

Mc Lennan North

2 Bedrooms

2 Bathrooms

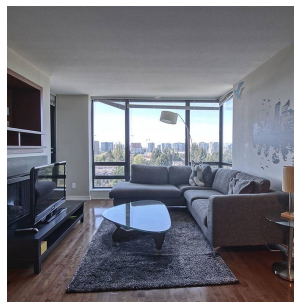
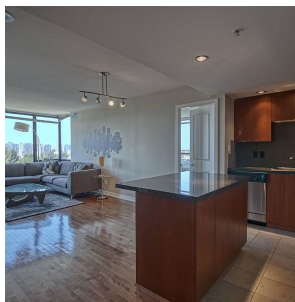
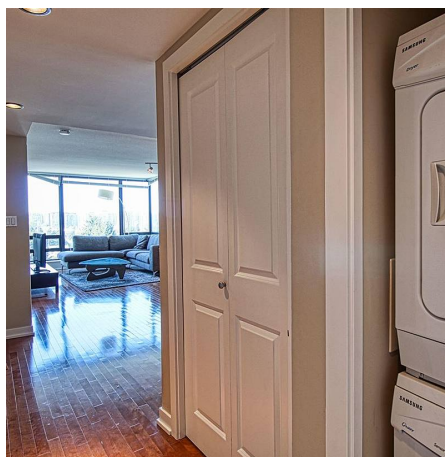
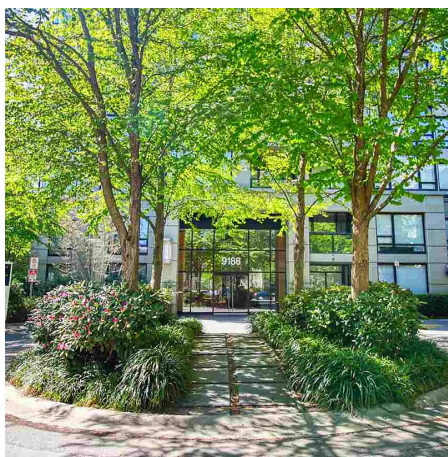
985 SF

\$412.95 Maintenance Fees

FEATURES

Year Built: 2005

Listed By: Oakwyn Realty Ltd.



rennie