

# 210 12339 Steveston Highway, Richmond

\$488,000



“The Gardens” by Townline located in Prime Richmond. This fantastic 1 bdrm + 1 parking with city view unit, features open floor plan, stainless steel appliances, granite countertop, laminate floor/carpet. Close to Ironwood shopping centre and bus stop. Easy to access HWY 99. This perfect for Home or Investment property.

## KEY INFORMATION

MLS® R2583214

Residential Attached

Gilmore

1 Bedroom

1 Bathroom

526 SF

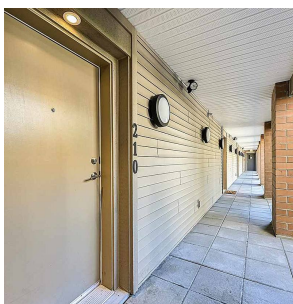
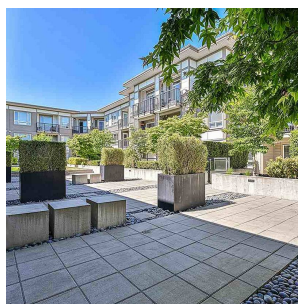
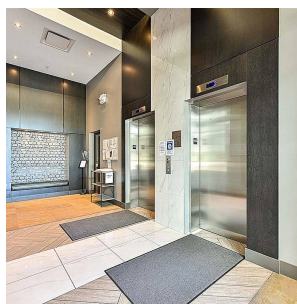
\$303.53 Maintenance Fees

## FEATURES

Year Built: 2014

Views: CITY

Listed By: RA Realty Alliance Inc.



rennie