

9572 125 Street, Surrey

\$1,299,000



Investors and Builders Alert!!! Welcome to this stunning very well maintained Rancher in Queen Mary Park with lots of upgrades. Very central location- rapid access to Surrey City Centre and Skytrain. Close to shopping and walking distance to Senator Reid Elementary School. Some updates include: Roof, windows, hot water tank, kitchen appliances, and floors. Huge Detached Garage has attached rec room that is perfect for office use. Very quiet fenced private yard with Lots of Parking for RV, Boat and Cars. Don't miss this one and Book your private showing now!!

KEY INFORMATION

MLS® R2582271

Residential Detached

Queen Mary Park

3 Bedrooms

1 Bathroom

1,375 SF

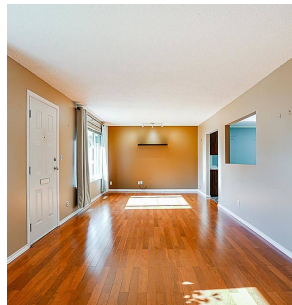
7,678 SF Lot



FEATURES

Year Built: 1966

Listed By: Royal LePage Global Force Realty



rennie