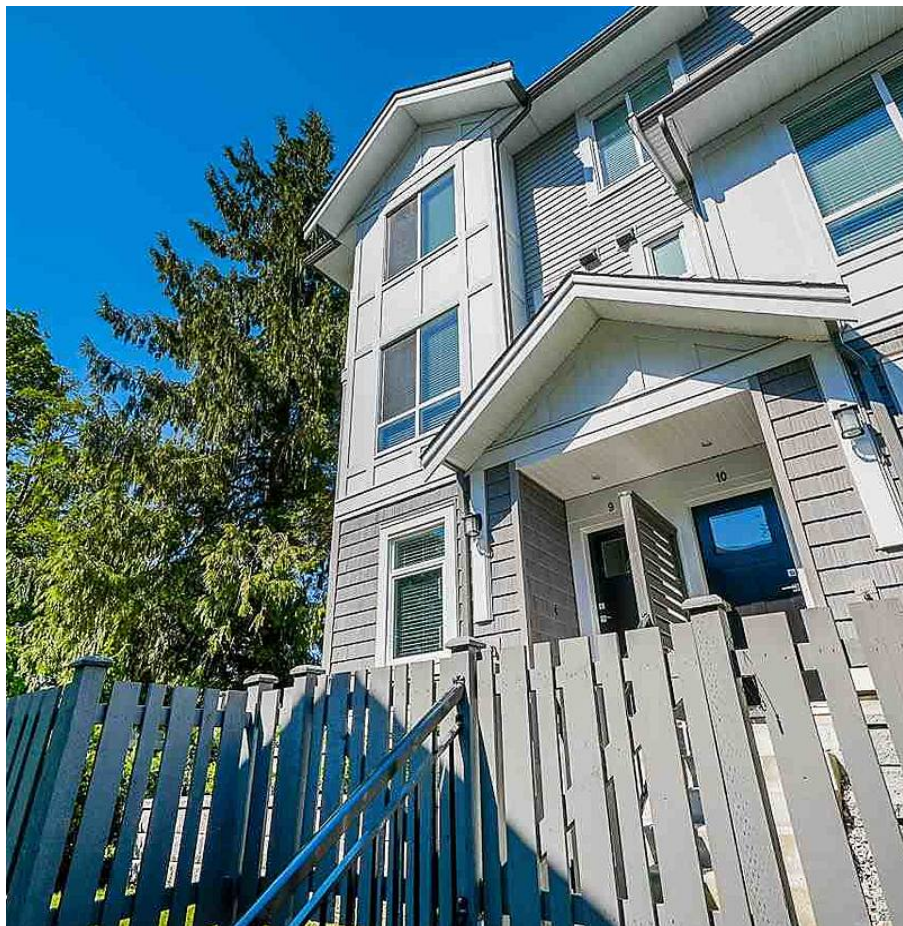


9 9688 162a Street, Surrey

\$899,000



Canopy! Your 4 BDRM + 3.5 Bath dream home in popular Tynehead Park neighborhood. This End Unit home boasts open floor plan of Gourmet Kitchen w/ huge breakfast table spacious, Living Rm & Dining Rm. Upstairs MBDRM w/ 4 Pieces bath plus 2 more BDRMs. Daylight walk out BSMT is finished w/ good sized BDRM w/ 3 Pieces bath perfect for extended family, extra windows for more Sun Lights, fully fenced backyard. Side by Side double Garage. You can take a walk to Tynehead Park every morning, Close to North Surrey Secondary, and close to Shopping, transit Nearby.

KEY INFORMATION

MLS® R2581537

Residential Attached

Fleetwood Tynehead

4 Bedrooms

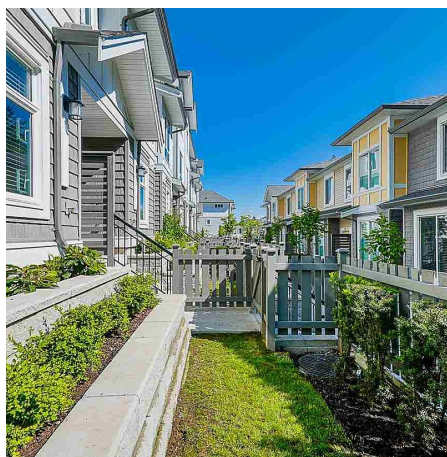
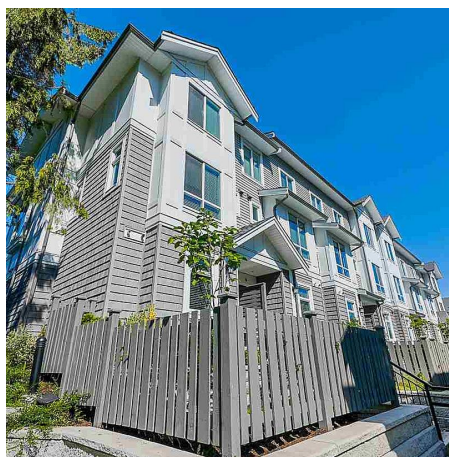
4 Bathrooms

1,791 SF

FEATURES

Year Built: 2020

Listed By: Emily Oh Realty



rennie