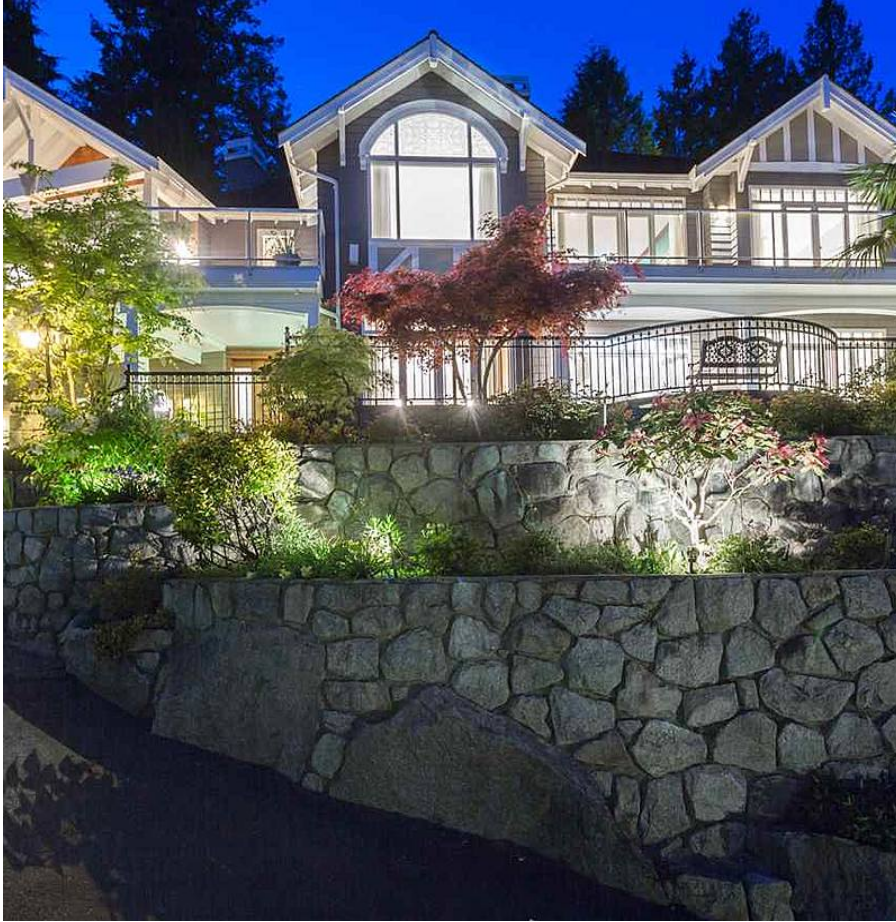


# 3395 Thompson Crescent, West Vancouver

\$4,988,000



A luxurious custom residence situated on a lush south-facing property in West Bay offering spectacular ocean & city views to Stanley Park, Vancouver's Inner Harbour, Point Grey & the West Side. Exquisitely appointed with the finest quality this residence features a spacious 5,064 sf open flrpln on 2 levels, 5 bdrms - incl breathtaking master w/spa-like ensuite & walk-in closet. A custom kitchen w/top-of-the-line ss appliances, brkfst bar with adjacent Eating Area, large Family Room w/built-in media centre & fireplace. Gracious Living & Dining areas with vaulted ceilings, large picture windows - all opening out to manicured gardens & sundrenched patios. Walking distance to all local amenities including McKechnie Park, West Bay school & beaches. This the perfect family home!

## KEY INFORMATION

MLS® R2129149

Residential Detached

Westmount

5 Bedrooms

4 Bathrooms

5,064 SF

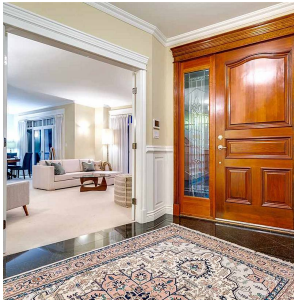
17,045 SF Lot

## FEATURES

Year Built: 2000

Views: Spectacular Ocean & City

Listed By: rennie & associates realty ltd.



**Jason Soprovich**

604.817.8812

jsoprovich@rennie.com

rennie.com/jasonsoprovich

**rennie**