

502 5638 201a Street, Langley

\$599,800



WELCOME HOME to this PENTHOUSE unit, located at THE CIVIC in Langley City. ENCLOSED SOLARIUM has folding windows and city views. This well appointed 2 bed, 2 bath PLUS DEN unit features bedrooms on opposite sides of the condo for privacy, each with a walk-through closet into separate bathrooms. Spacious layout with 9' ceilings plus 12' vaulted ceiling in living room make this space feel even bigger than it already is. Enjoy all the luxuries of this suite with laminate flooring, stainless appliances, white kitchen with large island Guest Suite, private courtyard with playground

KEY INFORMATION

MLS® R2583853

Residential Attached

Langley City

2 Bedrooms

2 Bathrooms

989 SF

\$293.13 Maintenance Fees

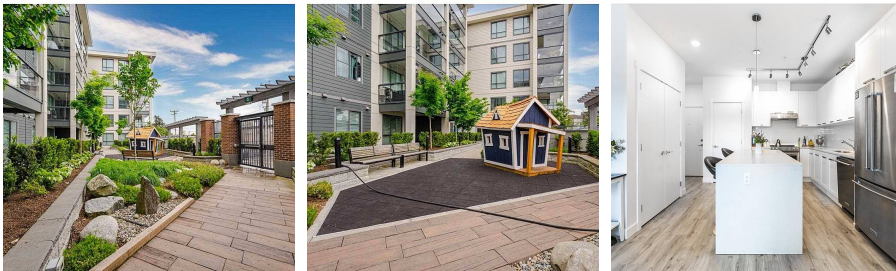


FEATURES

Year Built: 2019

Views: City Views

Listed By: Royal LePage - Wolstencroft



rennie