

# 1201 111 W Georgia Street, Vancouver

\$835,000



Welcome to Spectrum 1 by Canada's Largest Community Builder, Concord Pacific! This rarely available 2 Bed + Den south east facing suite features floor-to-ceiling windows with beautiful views of False Creek, BC Place & Science World, modern laminate flooring throughout and Amazing in-building amenities, which include 24 hour concierge service, a 80' indoor pool, sauna/steam room, hot tub & exercise centre. This Central downtown Vancouver location has a Walkscore of 96! Just steps to transit, False Creek, Seawall, Yaletown, BC Place, Rogers Arena, World Famous Robson Street with many choices of shopping, restaurants and cafe's. This home is perfect for central downtown living or as a savvy investment property! 1 regular parking stall is included. Call today for your private viewing!

## KEY INFORMATION

MLS® R2584544

Residential Attached

Yaletown

2 Bedrooms

1 Bathroom

846 SF

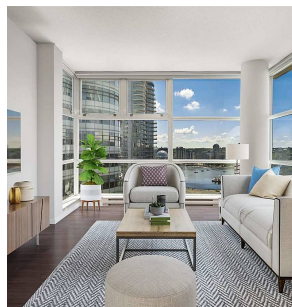
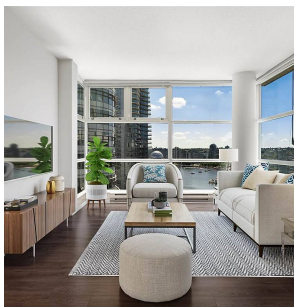
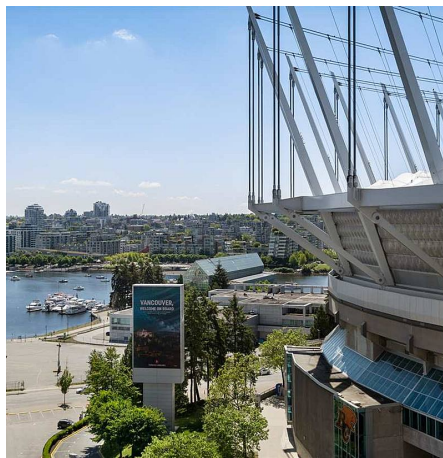
\$468.00 Maintenance Fees

## FEATURES

Year Built: 2007

Views: South East/Science World

Listed By: rennie & associates realty ltd.



**Salina Kai** PREC\*  
604.773.7013  
skai@rennie.com  
rennie.com/salinakai

**rennie**