

4 9977 138 Street, Surrey

\$599,900

SOMERSET

SURREY CITY CENTRE

First time offered for sale, SOMERSET is a collection of 39 one, two, and three bedroom condo and townhome style home conveniently located on a residential street in Surrey City Centre and within a short walking distance to King George Skytrain Station, the brand new Save-on-Foods, Holland Park and other great local amenities. Spacious 1698 sqft two level townhome, 3 bed/2.5 bath with an outdoor entry from a private patio. Main floor living room w/gas fireplace, DEN for work space and a generous eating area off the kitchen. Upper floor has three large bedrooms, walk-in closet, 2 baths and a large laundry room. Home includes 2 secured underground parking & storage locker. SOMERSET is a well maintained building that shows pride of ownership. Call today to find out more.

KEY INFORMATION

MLS® R2584710

Residential Attached

Whalley

3 Bedrooms

3 Bathrooms

1,698 SF

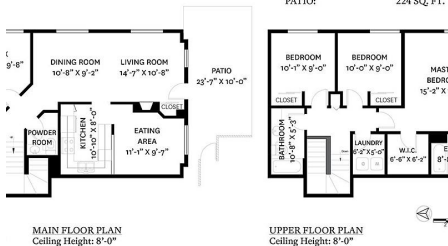
FEATURES

Year Built: 1997

Listed By: rennie & associates realty ltd.

4 - 9977 138 STREET, SURREY, BC

MAIN FLOOR TOTAL: 878 SQ. FT.
UPPER FLOOR TOTAL: 820 SQ. FT.
TOTAL: 1,698 SQ. FT.
PATIO: 224 SQ. FT.



THIS ILLUSTRATION IS NOT SUITABLE FOR CONSTRUCTION/ARCHITECTURAL PURPOSES.
S ARE APPROXIMATE AND MAY NOT BE TO SCALE. E&O INSURED.



Clarke Mallory PREC*
604.316.9917
cmallory@rennie.com
rennie.com/clarkemallory

rennie