

1110 988 Quayside Drive, New Westminster

\$550,000



Welcome to Bosa RiverSky2- the most luxurious high-rise view residence in the City. This bright and functional 1 bed+den Waterfront home faces the River (south). This dream home features the perfect BosaSPACE design for innovative and truly functional and efficient floor plans for any lifestyle- Sleep theatre (built in Murphy bed/extra seating), extendable kitchen island converting into a long dining table that sit up to 8 people! Prime location- 3 mins walk to Skytrain (no skytrain noise), Quayside River Market, retail just downstairs. Resort-like amenities: full-time concierge, fully equipped gym, yoga studio, RiverSky Club with a Fireside lounge and full kitchen, rooftop terrace overlooking magnificent water views- with lounge area, fire pit, and BBQ area.

KEY INFORMATION

MLS® R2584933

Residential Attached

Quay

1 Bedroom

1 Bathroom

596 SF

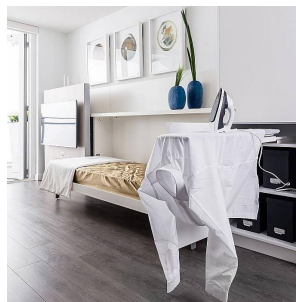
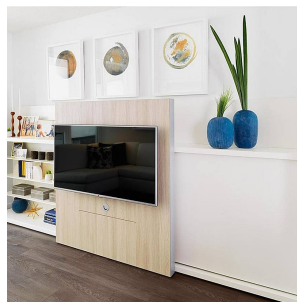
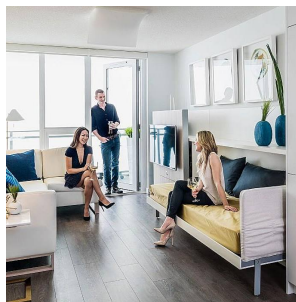
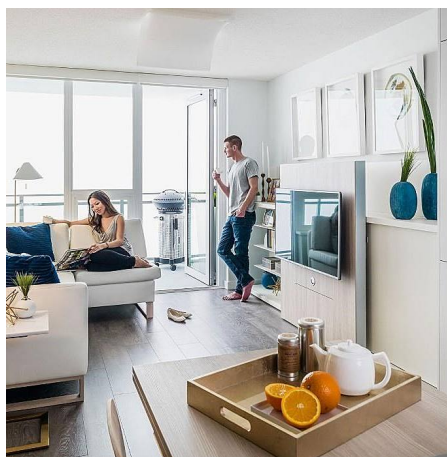
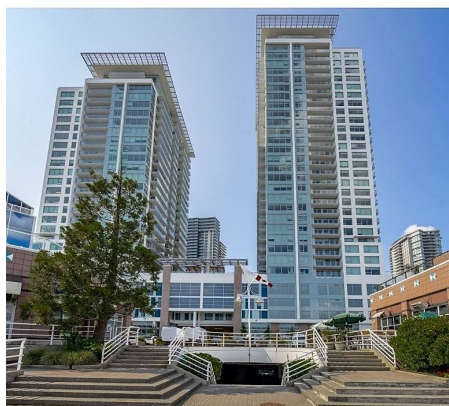
\$287.00 Maintenance Fees

FEATURES

Year Built: 2019

Views: RIVER, Southern exposure

Listed By: RE/MAX Select Properties



rennie