

# 12921 Southridge Drive, Surrey

\$1,574,900



Panorama Ridge on 30,927 sqft lot beautiful property with an ocean and mud bay flats view. Large rancher 2867 sqft is in good shape with a large recroom 19 x 24 with a wet bar. Long driveway and double garage. Totally private backyard with peach, pear, apple, plum and cherry trees. The home has 4 skylights, 2 furnaces, 2 hot water tanks. The kitchen was renovated in 2003. The roof was replaced about 2003. Luxurious ensuite in large master bedroom with french doors opening onto a patio. There is good view potential for this property.

## KEY INFORMATION

MLS® R2584650

Residential Detached

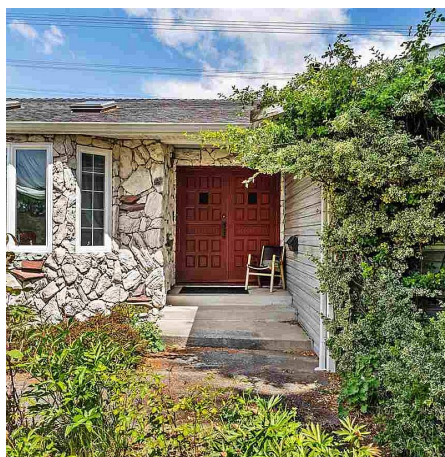
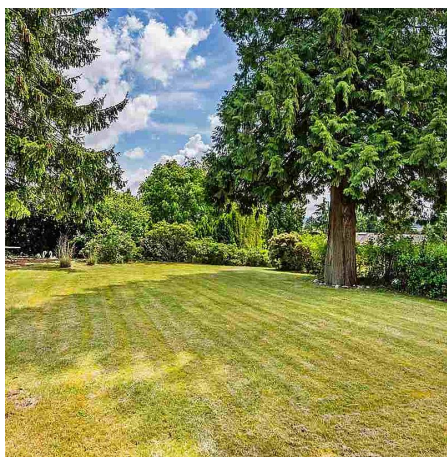
Panorama Ridge

4 Bedrooms

3 Bathrooms

2,867 SF

30,927 SF Lot

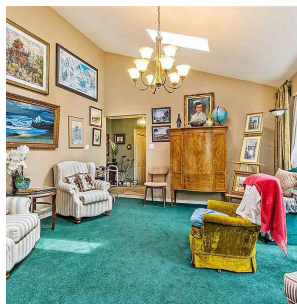
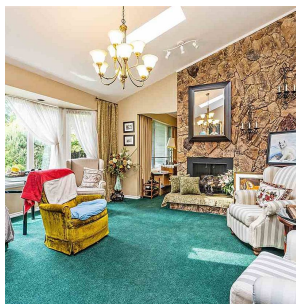


## FEATURES

Year Built: 1979

Views: Ocean

Listed By: Homelife Benchmark Realty Corp.  
(Branch)



rennie