

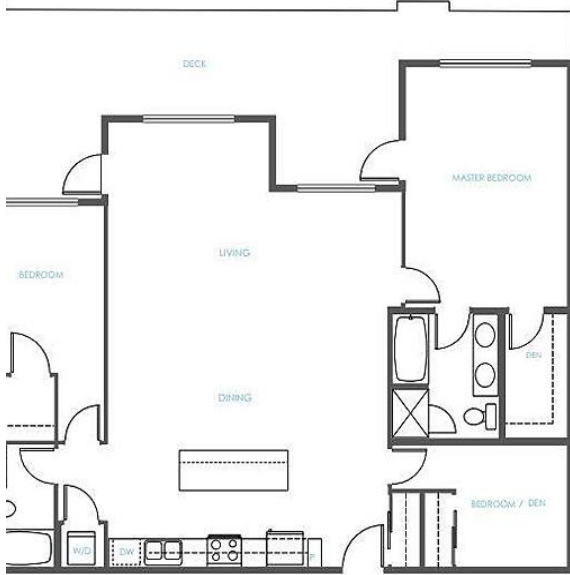
B222 20487 65 Avenue, Langley

\$679,900

PLAN X

CONDOMINIUMS

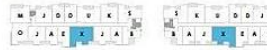
2 BEDROOM + DEN
2 BATH
1,401 SQ.FT



FLOOR 4



FLOOR 3



FLOOR 2



BUILDING A

BUILDING B

This is a Large SOUTH-FACING unit with 2 bed + den with generous sized bedrooms, 9' ceiling height in living areas, stunning open concept galley style kitchen with 8' island. SOUTH-FACING large window to let in natural light. This unit comes with 2 parking stalls, 1 storage. Amenities include outdoor clubhouse, fitness studio, outdoor playground. Short walking distance to many conveniences such as Costco, Walmart, City Hall, Community Centre, Library and a close driving distance to Willowbrook Mall.

KEY INFORMATION

MLS® R2585280
Residential Attached
Willoughby Heights
2 Bedrooms
2 Bathrooms
1,401 SF

FEATURES

Year Built: 2021
Listed By: Evergreen West Realty

In our continuing effort to improve and maintain the high standard of the Township Commons development, the developer reserves the right to modify or change plans, specifications, fees without notice. Materials may be substituted with equivalent or better at the developer's sole discretion. All dimensions and areas are approximate and are based on surveyor measurement or mirrored plans occur throughout the development phases please see latest set of architectural plans for current layout if material to your decision to purchase. Illustrations and renderings, conception and are intended as a general reference only. E.&O.E.

COMMONS

Langley Municipal Centre

FREQUENTLY ASKED QUESTIONS

Address	20487 65th Avenue, Langley City, BC
Amenities	Two-storey Clubhouse with Entertainment Lounge, Kitchen, and Fitness Room
Appliances	Stainless Steel Appliances including bottom mount fridge, side-in electric range, dishwasher, chimney style hoodfan, built-in microwave, and stackable washer and dryer
Lighting	Pot lighting or designer pendants and under-cabinet task lighting
Energy Efficiency	Energy saving double-glazed windows and patio doors, low-E glass windows
Cable Provider	Welcome Home kit with 1-year free rental of HD digital PVR programming and high-speed internet with WiFi
Ceiling Height	9' ceiling height in living areas
Colour Schemes	White or Modern
Estimated Completion	Early Summer 2021
Deposit Structure	5% Deposit Payable to "TERRA LAW CORPORATION IN TRUST"
Parking	2 parking spaces
Storage	1 storage locker
Pets	2 dogs or 2 cats or 1 of each
Rentals	Allowed
Strata Fees	Approx. \$0.39 per sq. ft.



VNSHIP MONS

FULL BATHROOMS
In addition to the master bedroom, you'll have a full bathroom with a tub or shower or shower and separate vanity, depending on the location of the unit.
And bathroom cabinets with appointed handles look great!

Y CONSTRUCTION & PEACE OF MIND
Safety Home - Owner Protection Warranty including:
Construction Defect Insurance, Building wrap guarantee, 10-year structural warranty, and 10-year plumbing and electrical warranty.
You'll also have glass front doors, double window panes and more.
Quality work is what we suggest.
An impressive building team from home to help with handover.

GOURMET KITCHENS

Two-storey kitchen with open concept galley style kitchen with double oven and dishwasher with island and bar stools or bar stools.
Cabinets with soft-close drawers, convenient pull-out shelves, built-in trash bin, and more.
Cabinets featuring a solid kitchen island.
Cabinets with soft-close drawers or pull-out shelves, built-in trash bin, and more.
Cabinets with soft-close drawers or pull-out shelves, built-in trash bin, and more.

• Bright pot lighting or designer pendants, under-cabinet or island lighting
• Convenient under cabinet task lighting
• Full complement of designer-quality hardware
• Soft-close drawers and doors
• Soft-close cabinet doors
• Soft-close drawers and doors
• Soft-close cabinet doors
• Soft-close drawers and doors

VNSHIP MONS

IMPRESSIONS
Great Architecture building gives you and your family a sense of style with the most thoughtful construction and finishing touches, and the most beautiful views, ensuring you'll have a home that's truly yours.
The building entry for convenience, giving you and your family a sense of style with the most thoughtful construction and finishing touches, and the most beautiful views, ensuring you'll have a home that's truly yours.

HTHUL CONVENIENCES
In-home entertainment system
In-home security
In-home smart home system
In-home smart home system
In-home smart home system
In-home smart home system

IMPRESSIVE FEATURES

INTERIORS EVERYONE CAN ENJOY
• Fresh paint throughout the unit for a clean and inviting look
• Designer-quality hardware throughout, with cabinet and built-in hardware
• Designer-quality hardware throughout, with cabinet and built-in hardware
• Designer-quality hardware throughout, with cabinet and built-in hardware
• Designer-quality hardware throughout, with cabinet and built-in hardware

AMENITIES
Outdoor Clubhouse (Community Amenities Building)
Outdoor Clubhouse (Community Amenities Building)
Outdoor Clubhouse (Community Amenities Building)
Outdoor Clubhouse (Community Amenities Building)

