

32369 Alpine Avenue, Abbotsford

\$1,288,000



2 LOTS SUBDIVISION POTENTIAL! This is a truly unique property, executive home from a bygone day set on an almost 9000sqft corner lot. Large corner lot with great sub dividable potential. Large rooms and tons of character touches. Vaulted lvgrm and dimrn ceiling, extra tall windows, island in the kitchen with a bank of storage closets. Built in stove and range top. View of the backyard from the kitchen sink. Spacious family room off the kitchen with patio door leading to a huge patio, great for those cocktail party bbqs. Large master suite with adjacent dressing and makeup area as well as a private balcony. Cheater ensuite with double sinks. All measurements and age are approximate, buyer/buyer's to verify if important.

KEY INFORMATION

MLS® R2585716

Residential Detached

Abbotsford West

3 Bedrooms

3 Bathrooms

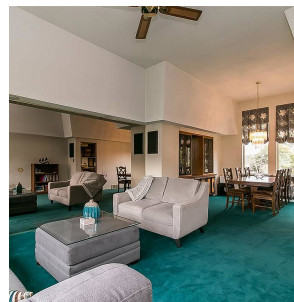
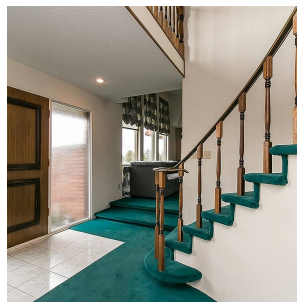
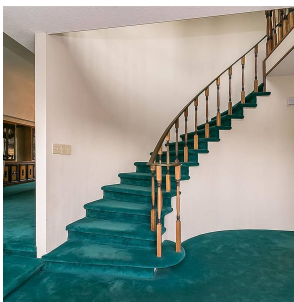
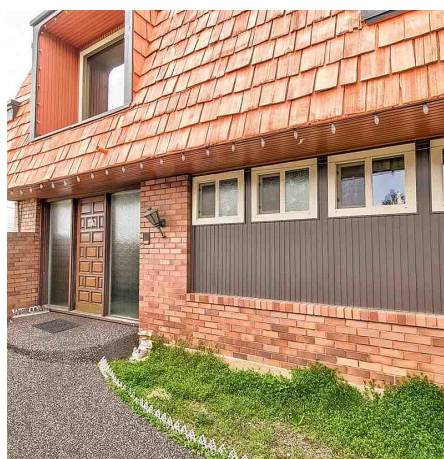
2,942 SF

9,000 SF Lot

FEATURES

Year Built: 1969

Listed By: Planet Group Realty Inc.



rennie