

# 201d 1660 E 5th Avenue, Vancouver

\$1,288,000



Steps to Commercial Drive's vibrant shops & restaurants, La Menta is a fresh & bold addition to an historic neighbourhood. Each of the 8 homes has its own unique features & floor plans, perfectly designed for families & professionals. 4 of the homes feat. breathtaking rooftop terraces w/ cityscape views. Quality construction by award winning family developer Southstreet in partnership w/ Saint Construction. Built sustainable materials w/ leading energy-efficient design makes this a home that you can be proud to live in. Bridged entryways, common bbq & chalkboard wall to encourage community connections while also feeling like an extension of your own backyard. Secure shared bike storage, keyed private entrances w/ security cameras. La Menta invites homeowners to enjoy a fresh way of living

## KEY INFORMATION

MLS® R2586074

Residential Attached

Grandview Woodland

3 Bedrooms

3 Bathrooms

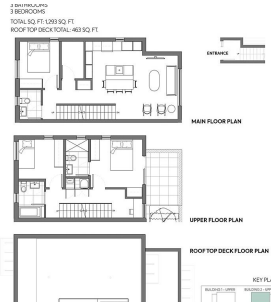
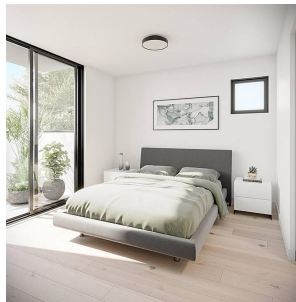
1,293 SF

## FEATURES

Year Built: 2022

Views: South East

Listed By: RE/MAX Select Properties



rennie