

# 46167 Reece Avenue, Chilliwack

\$935,000



Beautiful Heritage home in downtown Chilliwack that's walking distance to schools, parks, shopping and dining. Investment opportunity with this 77'x 166' lot. Must see this 5 bed, 2 full baths, with a solarium on the East side of this vintage home. Truly amazing finishing and high ceilings throughout this unique house that shows so well because of the obvious love and care put into maintaining this property. Full unfinished basement for plenty of storage or potential future projects. Huge private backyard with deck to entertain friends and family. Large detached heated double garage for plenty of parking, storage and possible workshop. Lots of parking with the long driveway and parking out front. Beautiful home, great location, come and see for yourself.

## KEY INFORMATION

MLS® R2586374

Residential Detached

Chilliwack

5 Bedrooms

2 Bathrooms

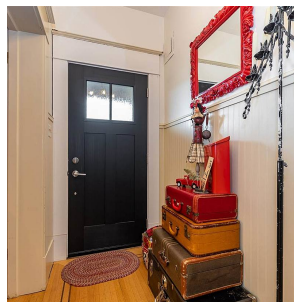
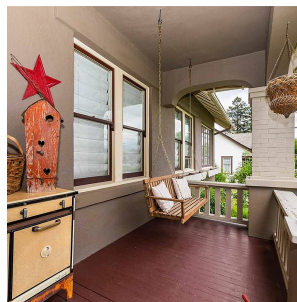
3,191 SF

12,872 SF Lot

## FEATURES

Year Built: 1920

Listed By: HomeLife Advantage Realty Ltd



rennie