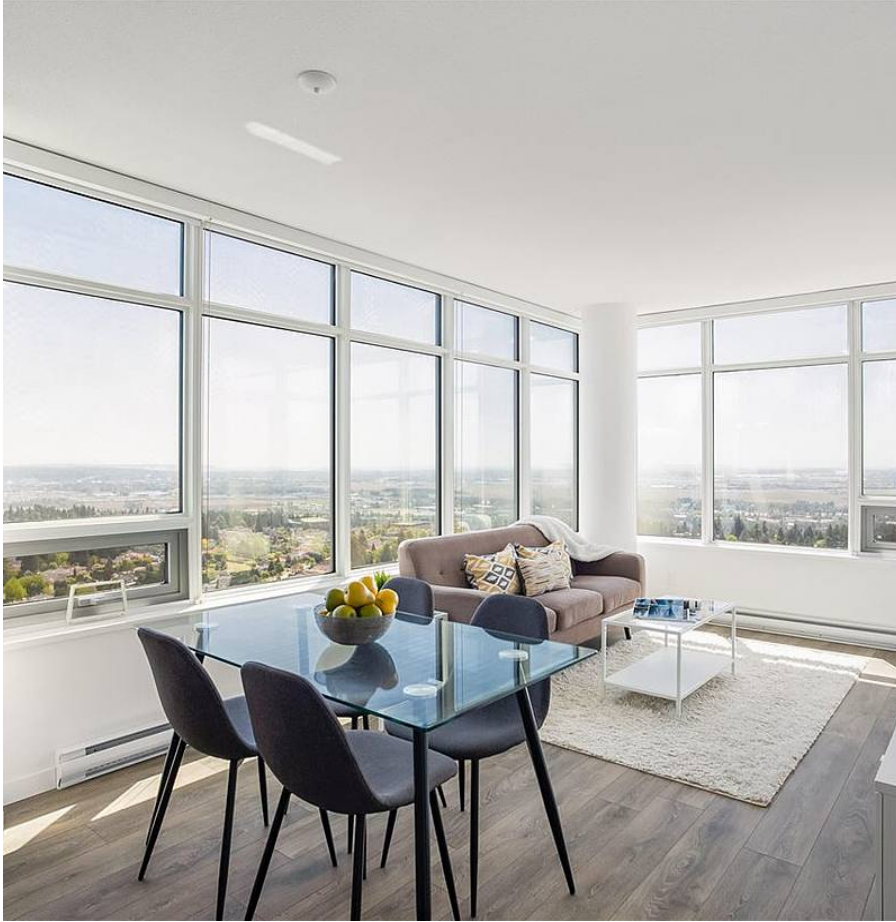


# 3305 6461 Telford Avenue, Burnaby

\$860,000



Metroplace by Intracorp. Rarely available, South East CORNER, 2 Beds / 2 Baths. VIEWS VIEWS VIEWS. Kitchen w/window, LARGE closets, FULL SIZE appliances, German cabinets, spacious bedrooms, heated en-suite floors, 8'4 HIGH ceilings. LIKE-NEW condition, large bedroom, closets (5'x2'), heated en-suite floors. Suite is in like new condition. Active council w/low maintenance fees. On-site caretaker. Includes one parking & storage. Unbeatable location, right across the street from Metrotown skytrain, Metrotown, Crystal Mall, Library & Bonsor Community Centre. 2 blocks from Maywood Elementary. Call to book your private appointment

## KEY INFORMATION

MLS® R2586411

Residential Attached

Metrotown

2 Bedrooms

2 Bathrooms

868 SF

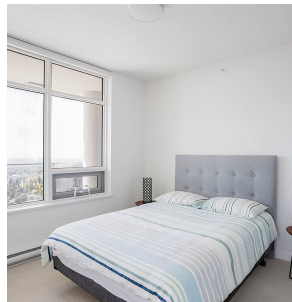
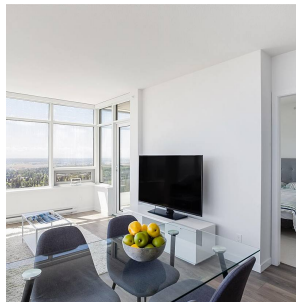
\$325.65 Maintenance Fees

## FEATURES

Year Built: 2014

Views: SE VIEWS OF VANCOUVER ISLANDS

Listed By: Jovi Realty Inc.



rennie