

# 8 9840 Alberta Road, Richmond

\$1,090,000



A bright beautiful corner unit by SONA. Units feature designer colour schemes, crown moldings, 9 ft. ceilings, High End Jennair stainless steel appliance package, Quartz countertops in kitchen and bathrooms, custom made cabinets, imported Italian tiles, all GROHE and KHOLER fixtures and faucets 1 car tandem garages, 3 bedrooms (w/ bonus flex room, could be a den or bedroom) & 2.5 bathrooms and an open functional layout. Conveniently located in central area with close proximity to new Walmart SMART Centre, Lansdowne Mall, a few minutes walk to school.

## KEY INFORMATION

MLS® R2586833

Residential Attached

Mc Lennan North

3 Bedrooms

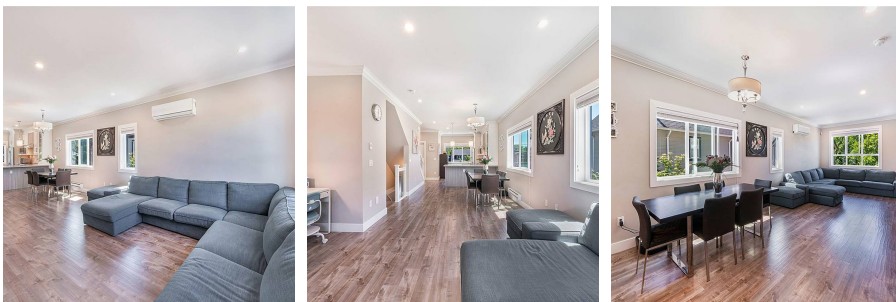
3 Bathrooms

1,387 SF

## FEATURES

Year Built: 2017

Listed By: RE/MAX Crest Realty



rennie