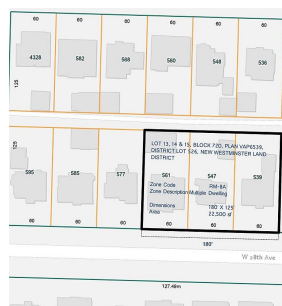
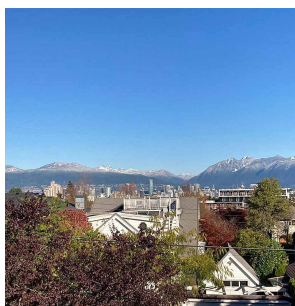
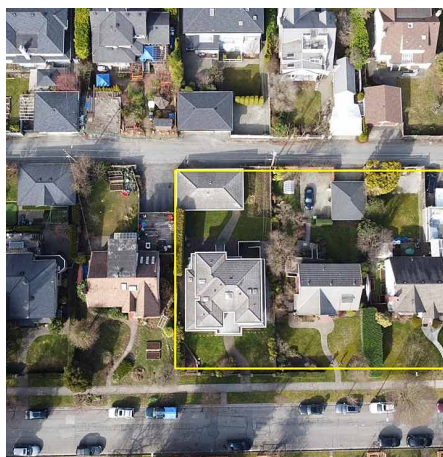
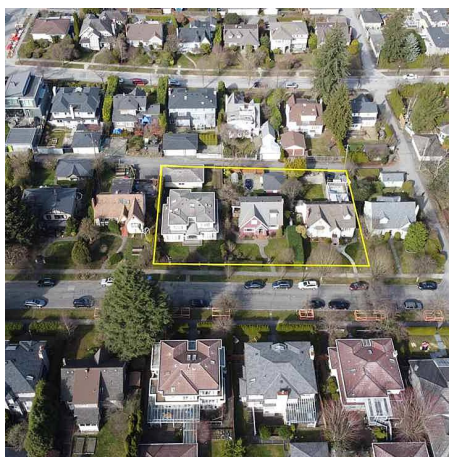


547 W 28th Avenue, Vancouver

\$5,000,000



LAND ASSEMBLY – Transit-oriented townhouse development opportunity in the heart of the Cambie Corridor. Ideally located on the north side of West 28th Avenue, a quiet residential street on Vancouver’s Westside. The properties are pre-zoned RM-8A, which allows for 3-storey townhome or stacked townhomes at a density of up to 1.20 FSR. Two neighbouring lots (539 (R2587234) & 561 (2587241) W 28th Ave) also listed for sale and must be sold together, totaling an ideal 22,500 sq.ft. development site. Site dimensions are approximately 180 feet by 125 feet. This site is within close proximity to Queen Elizabeth Park, Hillcrest Community Centre and is only 3 blocks to King Edward Canada Line Station. Please do not walk on the property

KEY INFORMATION

MLS® R2586930

Residential Detached

Cambie

3 Bedrooms

2 Bathrooms

2,376 SF

7,500 SF Lot

FEATURES

Year Built: 1939

Views: Downtown & North Shore Mountain

Listed By: Sutton Group Mattu Realty

rennie