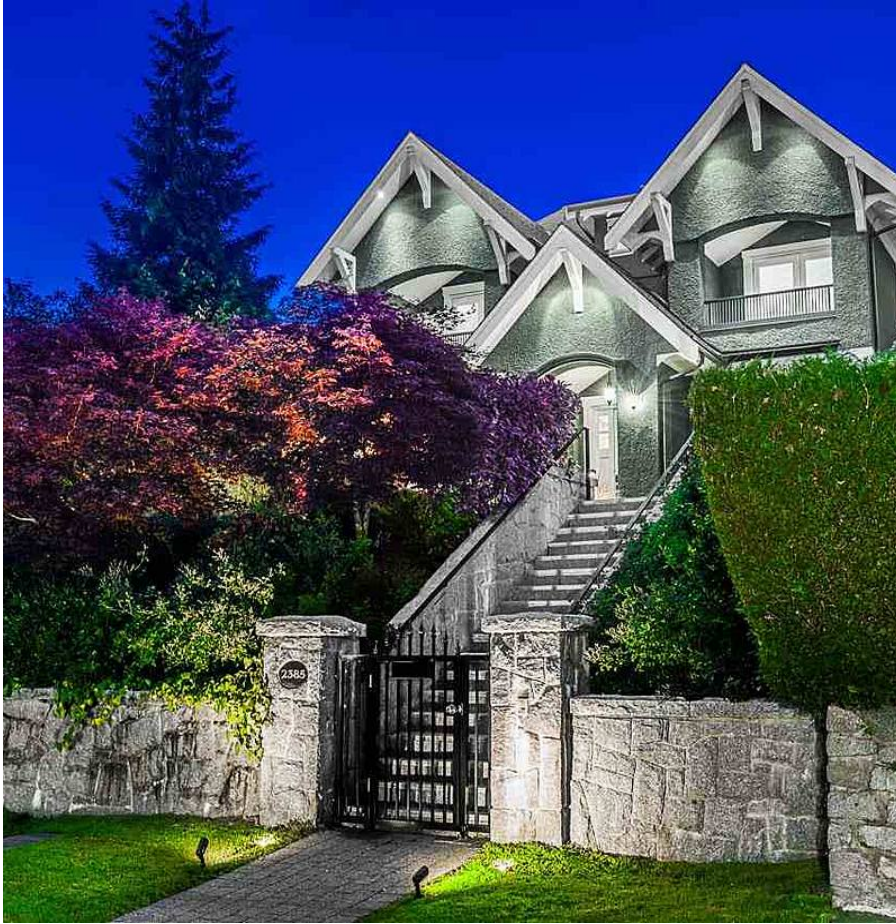


2385 Ottawa Avenue, West Vancouver

\$4,280,000



This Classic 'Marque Thomson Design' family home offers direct city & ocean views & is located in the heart of this most sought after location just steps to Dundarave Village & Erwin Park Elementary School. Experience a spacious main level with rich dark hardwood floors & beautiful white millwork throughout featuring a large Great Room with walk-out covered garden terrace, a stunning Gourmet Kitchen with all top grade appliances, daily Eating area, elegant Dining Room and private Study. On the upper level 3 bedrooms including a large Master Suite with walk-out view side terrace. The Lower Level offers a large Games room with Wet Bar, Home Theatre & 2 additional Bedrooms for family or a Nanny. Mature landscape and a 2 car garage.

KEY INFORMATION

MLS® R2587352

Residential Detached

Dundarave

5 Bedrooms

5 Bathrooms

3,984 SF

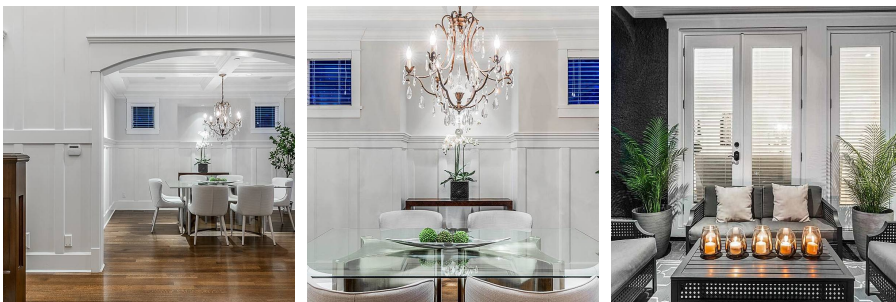
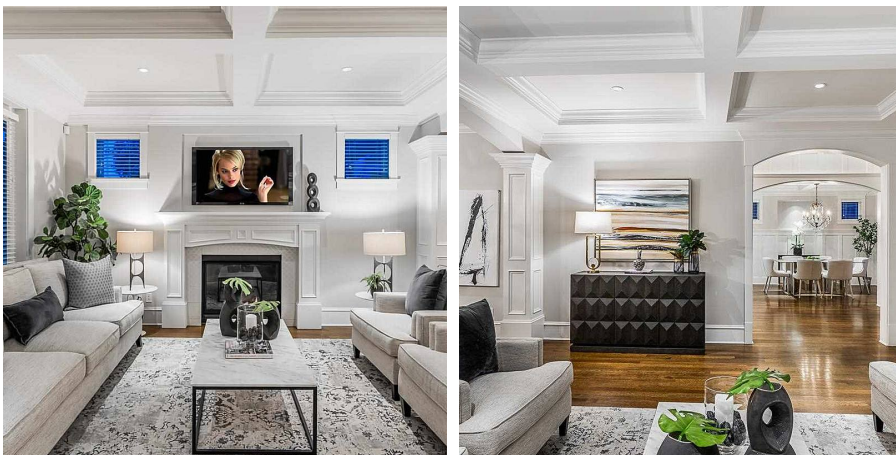
6,025 SF Lot

FEATURES

Year Built: 2008

Views: City and Ocean

Listed By: Angell, Hasman & Associates (Malcolm Hasman) Realty Ltd.



rennie