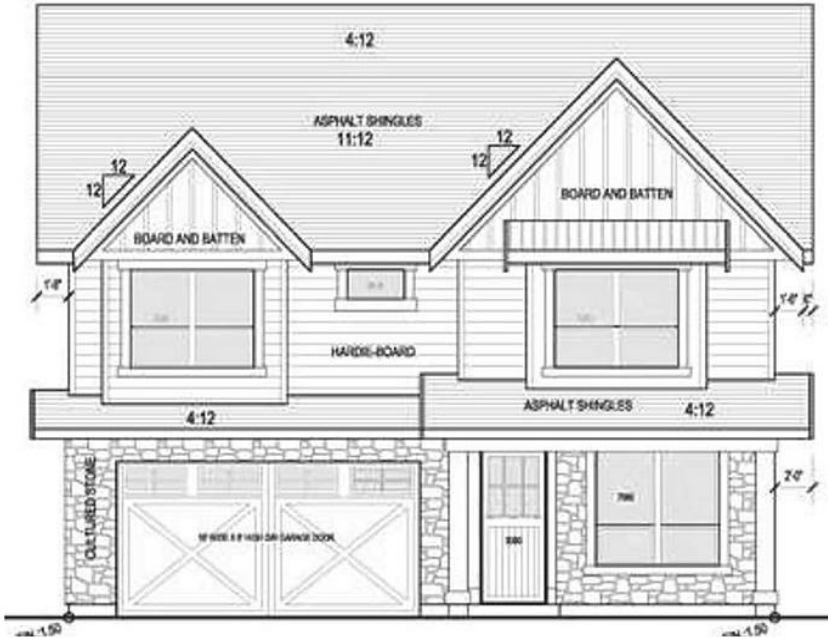


5468 52 Avenue, Delta

\$2,249,000



Don't miss this rare opportunity to customize your dream home with reputable South Delta builder, Kijee Custom Homes. This desired location is on a street of new homes, backing onto Hawthorne Elementary, and is steps away from the heart of Ladner and all it has to offer. This 4000 Sq.ft home sits on a large 7000 Sq.ft lot is designed for indoor/outdoor entertaining with an open concept plan. Boasting 5 bdrms, 4.5 baths, including a vaulted master bdrm and spa like ensuite with walk in his & her closets, vaulted great room, chefs kitchen, pantry/spice kitchen, media/games room, A/C, HRV and all sitting on a south facing backyard with a large covered patio. This home is currently under construction, call today for more info!!

KEY INFORMATION

MLS® R2587453

Residential Detached

Hawthorne

5 Bedrooms

5 Bathrooms

3,967 SF

6,694 SF Lot

FEATURES

Year Built: 2021

Listed By: Macdonald Realty Westmar