

# 303 14333 104 Avenue, Surrey

\$513,000



Welcome to Park Central: 6 level steel and concrete mid-rise luxurious complex! This building right in Hawthorne Park. A stunning one bedroom plus big sized den, which is being used as a second bedroom and has 2 full bathrooms. This unit has a very spacious layout with an open concept kitchen. Granite counter top, maple solid cabinets, stainless steel appliances. Close to Surrey Central Mall/Guildford Mall and all the main transportation, SFU and community center. The building has INDOOR POOL AND GYM.

## KEY INFORMATION

MLS® R2587353

Residential Attached

Whalley

2 Bedrooms

2 Bathrooms

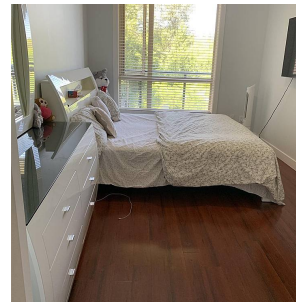
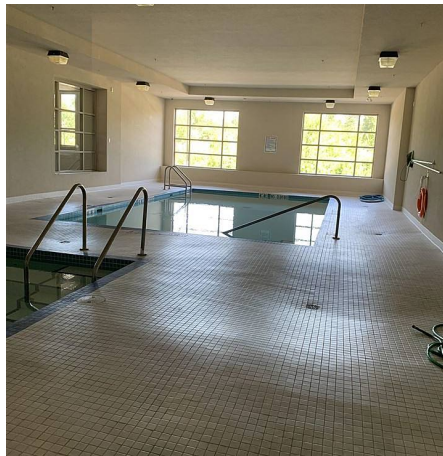
902 SF

\$254.00 Maintenance Fees

## FEATURES

Year Built: 2009

Listed By: City 2 City Real Estate Services Inc.



rennie