

306 1148 Heffley Crescent, Coquitlam

\$519,000



Very rare 2 bed/2 bath corner unit at The Centura in North Coquitlam. Directly connected to Henderson Mall and mere steps to Coquitlam Center, Aquatic Center, parks/trails, Evergreen Line Skytrain & Douglas College. Over-sized windows allow maximum natural light and offer views of your private and spacious 439sqft garden patio great for entertaining. Spacious living space features natural gas fireplace. Building amenities include a gym, bike room, sauna, and on site caretaker. No rental restrictions and 2 pets allowed. Book your PRIVATE viewing today!

KEY INFORMATION

MLS® R2588147

Residential Attached

North Coquitlam

2 Bedrooms

2 Bathrooms

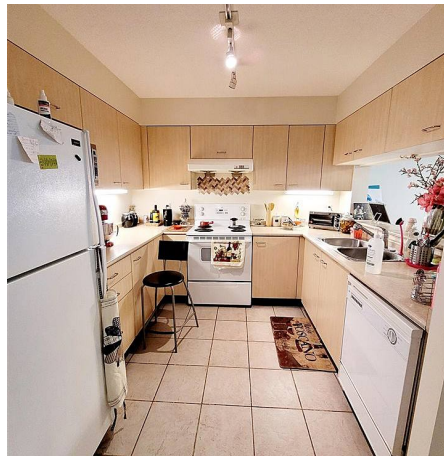
954 SF

\$405.21 Maintenance Fees

FEATURES

Year Built: 1998

Listed By: TRG The Residential Group Downtown Realty



rennie