

324 12639 No. 2 Road, Richmond

\$585,000



Welcome to NAUTICA SOUTH built by Adera. Located in beautiful and tranquil Steveston South, close to charming Steveston Village, waterfront South dyke trail, London Landing, Britania shipyard, and boardwalk. Exterior (windows, balconies, siding) and interior (paint flooring, lighting) improvements done in 2016 and roof in 2010. Enjoy the Steveston lifestyle in this unit with functional floor plan, newer s/s kitchen appliances and washer and dryer. Laminate flooring in living space and bedrooms, 2 covered balconies w/ EASTERN views of Farmland, 2 PARKING STALLS, and lots of visitor parking! Enjoy peaceful walks in the inner courtyard w/ ponds. Pet friendly building (2 cats or dogs allowed) and tenant occupied (month to month). Please allow 48 hours notice for showings. Call today to view!

KEY INFORMATION

MLS® R2588208

Residential Attached

Steveston South

2 Bedrooms

2 Bathrooms

855 SF

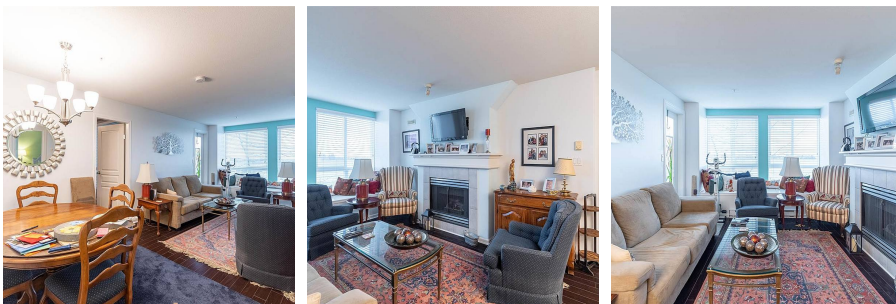
\$395.46 Maintenance Fees

FEATURES

Year Built: 1998

Views: Farmland

Listed By: Century 21 Prudential Estates (Rmd) Ltd.



rennie