

# 1505 6611 Cooney Road, Richmond

\$768,000



Very well maintained upper SE corner unit in Manhattan Tower. Beautiful 3 bedroom plus den with mountain and city view everywhere in the unit. Central location just mins away from skytrain, banks, malls, restaurants, and supermarkets. School catchment: Cook Elementary & MacNeill Secondary.

## KEY INFORMATION

MLS® R2588714

Residential Attached

Brighthouse

4 Bedrooms

2 Bathrooms

1,420 SF

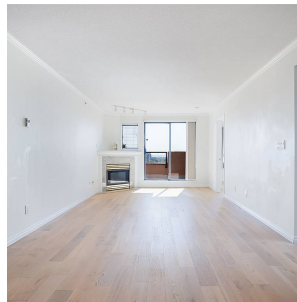
\$473.28 Maintenance Fees

## FEATURES

Year Built: 1997

Views: MOUNTAIN AND CITY

Listed By: Royal LePage Westside



rennie