

20 9977 138 Street, Surrey

\$559,900

SOMERSET

SURREY CITY CENTRE

First time offered for Sale. SOMERSET is a collection of 39 One, Two and Three bedroom condo & townhome style homes conveniently located on a residential street in Surrey City Centre and within a short walking distance to King George Skytrain Station, the brand new Save-on-Food, Holland Park and other great local amenities. Spacious 1510 sqft two level townhome, 2 bed/2.5 bath with outdoor entry from a large patio area. Main floor living room w/ gas fireplace, flex area for work space, and a generous eating area off the kitchen. Upper floor features two large bedrooms, walk-in closet, 2 baths and a laundry/storage room. Homes include secured underground parking & storage locker. SOMERSET is a well maintained building that shows pride of ownership. Call today to find our more.

KEY INFORMATION

MLS® R2588769

Residential Attached

Whalley

2 Bedrooms

3 Bathrooms

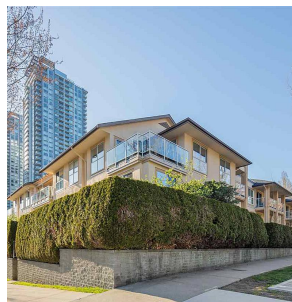
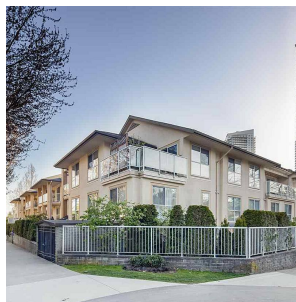
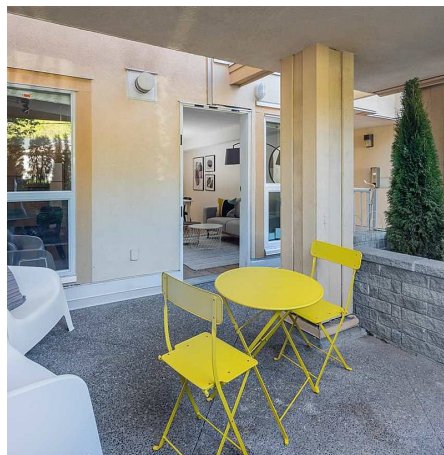
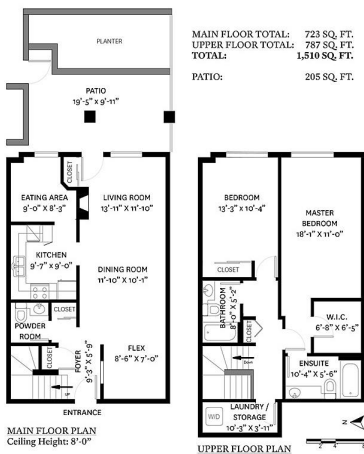
1,510 SF

\$426.50 Maintenance Fees

FEATURES

Year Built: 1997

Listed By: rennie & associates realty ltd.



Clarke Mallory PREC*
604.316.9917
cmallory@rennie.com
rennie.com/clarkemallory

