

# 25689 Dewdney Trunk Road, Maple Ridge

\$1,780,000



175' x 500' Flat 2 Acre lot with a completely renovated two and half story house. Featuring 3 bedrooms and 3 full bathrooms, conveniently located within a short drive to Downtown Maple Ridge. Walking distance to Garibaldi Secondary, Websters Corner Elementary & Maple Ridge Private School - IB program. RS3 zoning allows for many types of family based businesses such as Greenhouses, Nurseries, etc. Property also comes with a detached 240 SF room and 2 covered carports. If you have been looking for a nicely renovated acreage with plenty of outdoor space and minutes from city centre, this is the right property for you. Great location for living, investment and income.

## KEY INFORMATION

MLS® R2588833

Residential Detached

Websters Corners

3 Bedrooms

3 Bathrooms

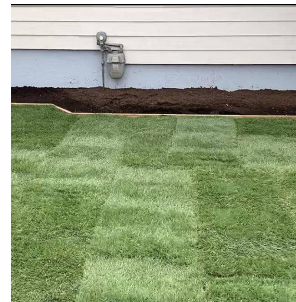
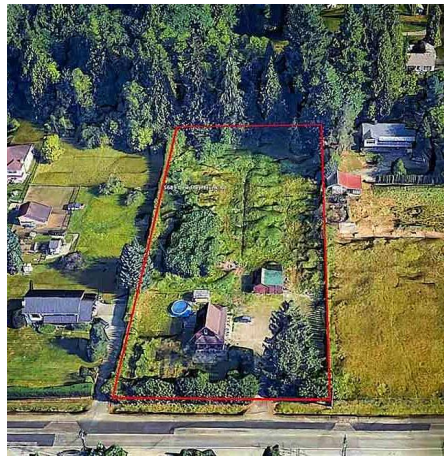
2,730 SF

87,500 SF Lot

## FEATURES

Year Built: 9999

Listed By: Royal Pacific Realty Corp.



rennie