

# 12271 Phoenix Drive, Richmond

\$1,938,000



This tastefully renovated home is a piece of gem in Richmond desirable area, quiet neighbourhood. The house has 3,273' living space situated on a large 5,869' lot, cozy and functional layout, high ceiling foyer entrance, five generous bedrooms plus den and three full bathrooms, cross hall living and dining rooms, gourmet kitchen with Stainless Steel appliances. Updated kitchen, HUGE master bedroom ensuite, painting inside & outside, flooring, ceiling lights and vinyl floors. Top school catchment - Homma Elementary with Early French Immersion & McMath Secondary.

## KEY INFORMATION

MLS® R2588928

Residential Detached

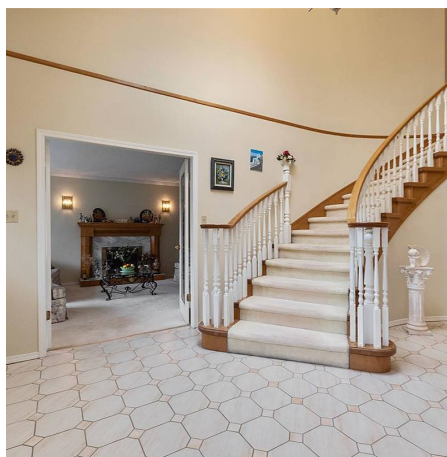
Steveston South

5 Bedrooms

3 Bathrooms

3,323 SF

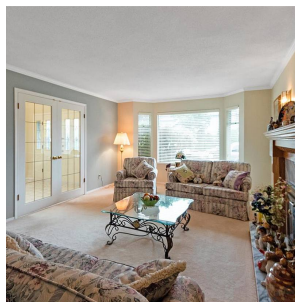
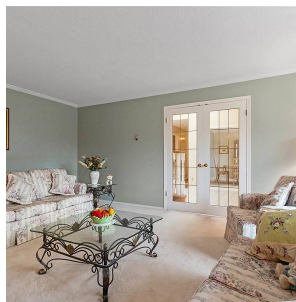
5,869 SF Lot



## FEATURES

Year Built: 1988

Listed By: rennie & associates realty ltd.



**Vivien Ma** PREC\*  
604.828.2268  
vma@rennie.com  
rennie.com/vivienma

**rennie**