

# Ph2 3668 W 10th Avenue, Vancouver

\$2,999,900



Raphael - A curation of 35 exquisite residences in Point Grey. Designed by Rafii Architects and inspired by a European aesthetic; contemporary style seamlessly blends with traditional architecture. This 4-storey building features a marble-look facade, classical columns, and expansive windows. All homes come with private patios or rooftop terraces to extend your living spaces. Show-stopping interiors by Ste. Marie Design feature timeless details including Italian cabinets, marble stone countertop and premium Wolf & Sub-Zero brands. Thoughtfully designed closet systems with ample space in the main entry and bedrooms. Composed of marble-inspired floors and walls, granite countertops, and chrome fixtures, the ensuite beautifully contrasts materials for a lasting impression of refinement.

## KEY INFORMATION

MLS® R2588977

Residential Attached

Kitsilano

3 Bedrooms

3 Bathrooms

1,368 SF

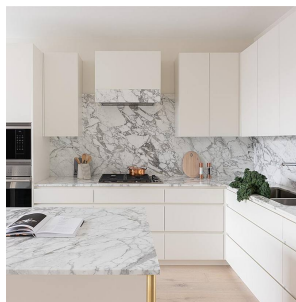
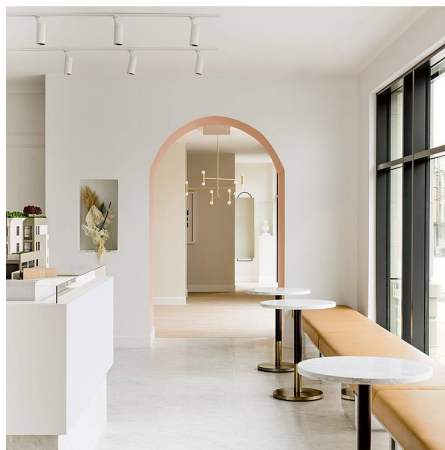
\$766.08 Maintenance Fees

## FEATURES

Year Built: 2024

Views: City

Listed By: rennie & associates realty ltd.



**Christopher Boyd** PREC\*  
604.351.0533  
cboyd@rennie.com  
rennie.com/christopherboyd



**Sabrina Gao**  
604.782.2609  
sgao@rennie.com  
rennie.com/sabrinagao

**rennie**