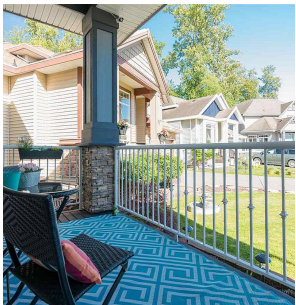
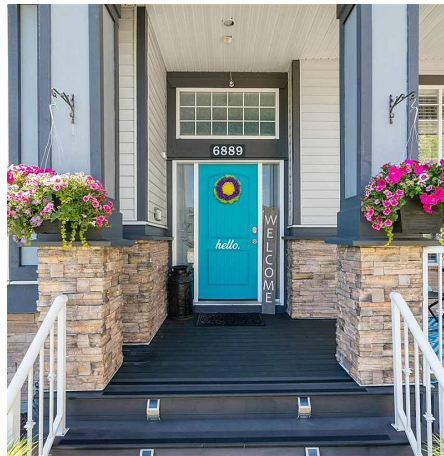
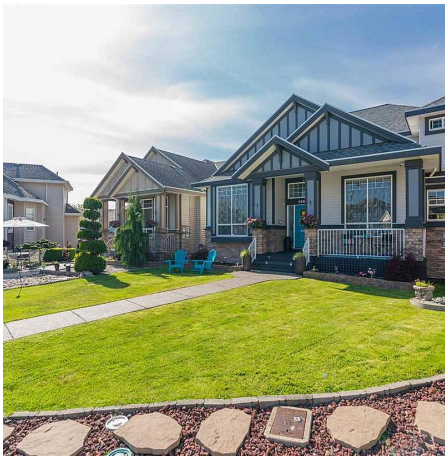


6889 184a Street, Surrey

\$1,599,000



BEAUTIFUL CUSTOM-BUILT HOME LOCATED IN A QUIET CUL-DE-SAC & FAMILY-ORIENTED NEIGHBOURHOOD! 6 Bed + 4.5 Bath home on a LARGE 8,474 sqft lot right next to a Fisheries-protected green belt. Inside, you'll be welcomed with high vaulted ceilings, a stunning stone fireplace in the living room, expansive windows for plenty of natural lighting, high-end hardwood flooring throughout & freshly painted interiors. Gourmet kitchen includes sleek granite countertops & a convenient spice kitchen. 2 Bedroom basement suite w/ separate washer/dryer + entry is a great mortgage helper! Huge covered sundeck w/ gas BBQ hook-up overlooking the green belt + creek! Gardener's heaven w/ greenhouse and lots of fruit trees. Motorized gate at the back. Schools and Fraser Hwy close by!

KEY INFORMATION

MLS® R2589201

Residential Detached

Cloverdale

6 Bedrooms

5 Bathrooms

3,927 SF

8,474 SF Lot

FEATURES

Year Built: 2008

Views: EAST NEWTON

Listed By: rennie & associates realty ltd.



Jordan Wong
778.378.6888
jwong@rennie.com
rennie.com/jordanwong

rennie