

17 9385 121 Street, Surrey

\$699,000



Fully renovated 1800sqft corner townhouse feels like a brand new home. This cedar three storey home with three bedrooms up and one down is the ideal single family home with extra large south facing living room overlooking the backyard and large courtyard so you can enjoy your summer BBQ on your private patio. Very convenient location. Skytrain, bus and Matheson Secondary School.

KEY INFORMATION

MLS® R2588320

Residential Attached

Queen Mary Park

4 Bedrooms

2 Bathrooms

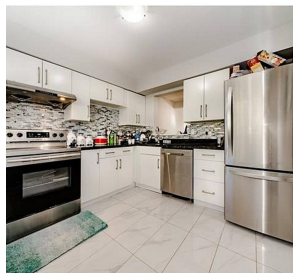
1,800 SF

FEATURES

Year Built: 1975

Views: City View

Listed By: Royal Pacific Realty (Kingsway) Ltd.



rennie