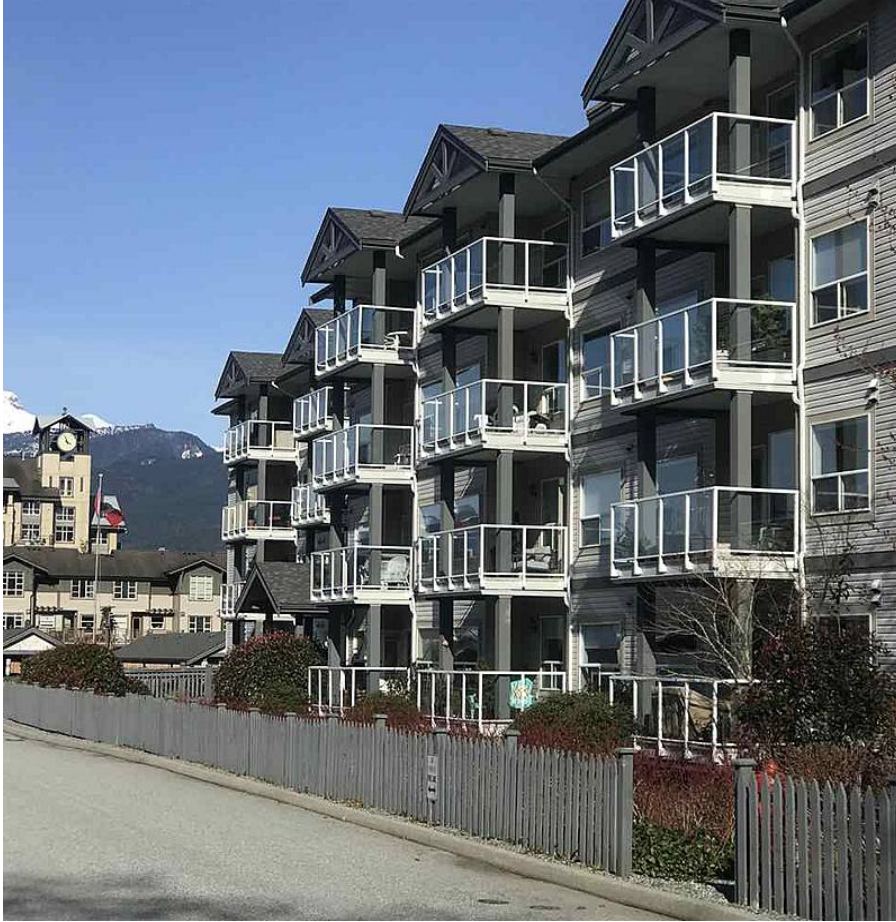


304 1203 Pemberton Avenue, Squamish

\$509,900



EAGLEGROVE 55 PLUS is perfectly situated at the quiet western fringe of downtown Squamish..., South facing end unit with windows on three sides! Stunning views of Mountains including the Stawamus chief and peaks of the distant Sea to Sky Gondola and Shannon falls, as well as the panorama of the growing town of Squamish. This 2 bedroom 1.5 bath home is in pristine condition. floors and some fixtures have been upgraded. The deck is covered and oversized for comfortable outdoor living. easy walks to shops and services, as well as to the endless multi use trail system and Eaglewind Park. Afternoon showings preferred. 4th floor common deck and library as well as main floor community room for social get togethers.

KEY INFORMATION

MLS® R2589192

Residential Attached

Downtown Squamish

2 Bedrooms

2 Bathrooms

969 SF

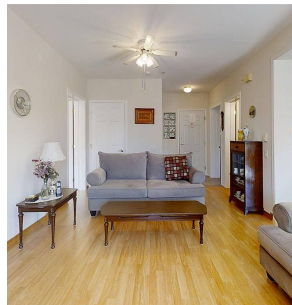
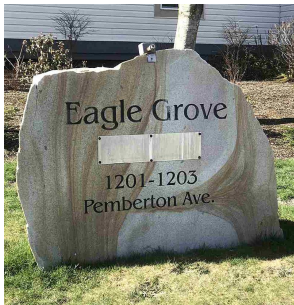
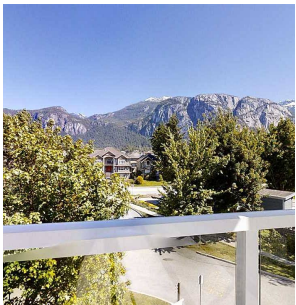
\$429.46 Maintenance Fees

FEATURES

Year Built: 1997

Views: MOUNTAINS

Listed By: RE/MAX Sea to Sky Real Estate



rennie