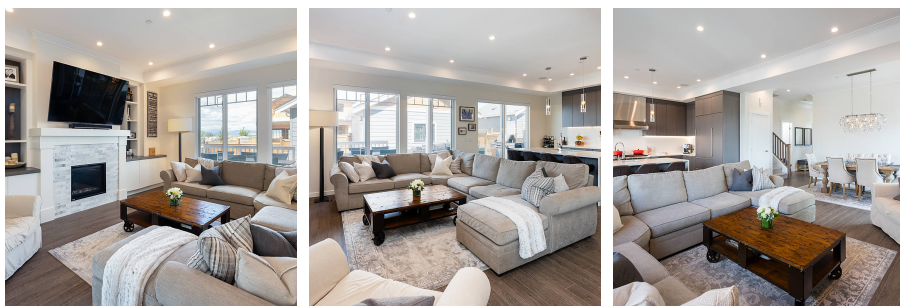


# 2298 Cormorant Drive, Tsawwassen

\$1,350,000



Custom, corner lot, 4 bdrm plus den home at Onni's New Haven in Tsawwassen. This home has all the space and all the extras! Kitchen features a Sub-zero/Wolf appliance package including an under counter beverage center and pro-style gas range, breakfast bar and built-in pantry. The main floor offers a spacious open concept living/dining room, den/office, a full bathroom and a mudroom to store your coats, shoes and sports equipment. Four bedrooms up and a well equipped laundry room with a built-in sink and quartz countertops. This home has upgrades throughout including blinds, crown moulding and a central vac system. Outside enjoy an expanded patio and one of the largest backyards in the development with a fully detached two car garage. Bal. of 2-5-10 New Home Warranty.

## KEY INFORMATION

MLS® R2589248

Residential Detached

Ladner Rural

4 Bedrooms

3 Bathrooms

2,235 SF

4,016 SF Lot

## FEATURES

Year Built: 2020

Listed By: rennie & associates realty ltd.



**Joanne Hoekstra**

604.722.6645

[jhoekstra@rennie.com](mailto:jhoekstra@rennie.com)

[rennie.com/joannehoekstra](http://rennie.com/joannehoekstra)

**rennie**