

50472 Kingston Drive, Chilliwack

\$1,500,000



Set atop of Marble Hill on pristine Eastern Hillside this contemporary Westcoast home is exceptional in every detail. This 6 bedroom 6 bathroom 2 Storey with basement is ideal for a multi-generational family and offers incredible flexibility as your needs change. The living room and dining have floor-to-ceiling windows to enjoy panoramic views of the Coastal Mountains. The kitchen is complete w/ high-end appliances, spacious dining area and openspace concept leading to your dining area and great room. Mainfloor features 3 bedrooms + Master Bed with a spa inspired ensuite. Downstairs has 2 extra rooms, rec room and Bonus 2 BedR legal suite for mortgage helper or in-laws. Built by reputable builders of luxury homes, Pinanncle International.

KEY INFORMATION

MLS® R2588824

Residential Detached

Chilliwack

6 Bedrooms

6 Bathrooms

3,625 SF

9,365 SF Lot

FEATURES

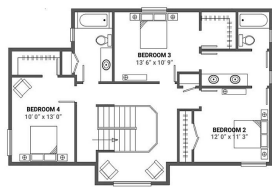
Year Built: 2021

Views: Mountain and Valley Views

Listed By: Reign Realty



BASEMENT



UPPER FLOOR
922 SQ.FT.

