

7225 Braeside Drive, Burnaby

\$3,290,000



Top quality custom built home with spectacular inlet and mountain view. 4 ensuite upstairs which 3 of them overlooking Burrard Inlet with covered balcony. Walkout basement with 2 bedroom rental suite, media room and guest room. Open concept design & layout marble tiles throughout main floor. European tilt and turn windows. Viking series s/s appliances (48" fridge). Beautiful yard & garden. Minutes walk from Westridge Elem, Sperling & Aubrey French Immersion, Burnaby North High School. Five minutes to SFU. Direct bus to Metrotown & close to skytrain.

KEY INFORMATION

MLS® R2588826

Residential Detached

Westridge

6 Bedrooms

7 Bathrooms

4,516 SF

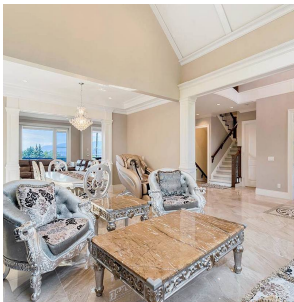
7,500 SF Lot

FEATURES

Year Built: 2015

Views: BURRARD INLET AND MOUNTAINS

Listed By: Pacific Evergreen Realty Ltd.



rennie