

305 11862 226 Street, Maple Ridge

\$525,900



Welcome home to Signature at Falcon Homes. This bright and airy two bedroom, two-bathroom condo is centrally located between Lougheed Highway and Dewdney Trunk Rd. Enjoy the best of Maple Ridge, with walking distance to an abundance of amenities, shopping centers, grocery stores, coffee shops, restaurants, Memorial Peace Park, Fletcher Park, close proximity to (Golden Ears Elementary, Thomas Haney School, School, St Patrick's School and Eric Langton Elementary School). Looking to downsize or get into the Real Estate market, this condo is the perfect space. See it for yourself. Call today, to book your private tour.

KEY INFORMATION

MLS® R2590052

Residential Attached

East Central Maple Ridge

2 Bedrooms

2 Bathrooms

1,045 SF

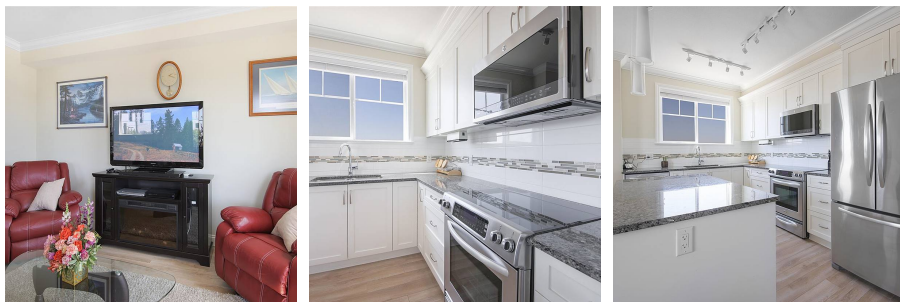
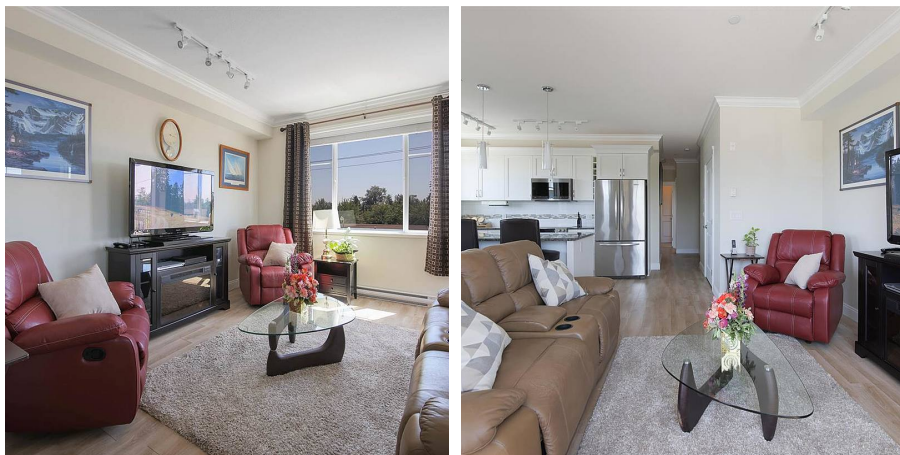
\$427.22 Maintenance Fees

FEATURES

Year Built: 2015

Views: CITY

Listed By: RE/MAX results realty



rennie