

30 1938 North Parallel Road, Abbotsford

\$699,900



Gorgeous unit at Parallel South! Like brand new 3 Bed + 2.5 Bath open layout unit featuring a modern kitchen designer cabinets, white quartz counters, stainless steel appliances & tasteful backsplash. Master bedroom with large walk in closet, spa-like ensuite with two sinks & a sizable shower. Large windows bring tons of natural light to the unit, double side by side garage & two more cars can be parked in front of the unit. Fenced backyard and an upper patio overlooking the courtyard, great for BBQ and relaxing. Parallel Market place at your doorstep & easy Hwy #1 access.

KEY INFORMATION

MLS® R2589930

Residential Attached

Abbotsford East

3 Bedrooms

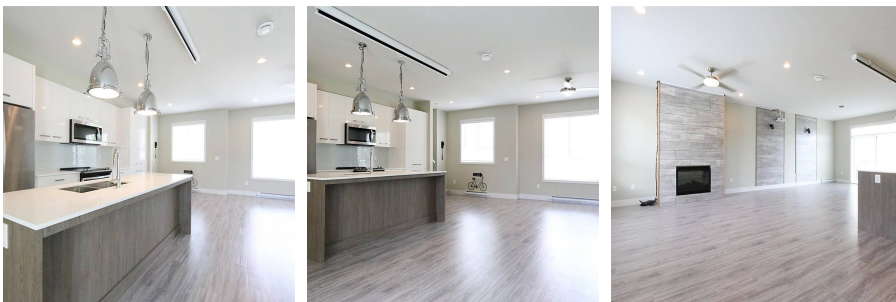
3 Bathrooms

1,361 SF

FEATURES

Year Built: 2018

Listed By: RE/MAX City Realty



rennie