

38 17033 Fraser Highway, Surrey

\$1,090,000



You can never find a Townhouse but LIVES like a single family home. 3+ den & 4 bed townhomes 2385 sqft, featuring fully-equipped recreation rooms, side by side garages & fully fenced yards. Bring out your inner chef with quality stainless steel appliances, Italian tile backsplash, & gorgeous stain & scratch resistant quartz countertops. Inviting 9ft ceiling welcomes you home, where you can enjoy your tiled fireplace, indulge in your spa-like rain shower or deep soaker tub. it's all a part of the Liberty Lifestyle. Walking distance to parks, schools, shopping & the future Skytrain Station. book a showing today!

KEY INFORMATION

MLS® R2589874

Residential Attached

Fleetwood Tynehead

4 Bedrooms

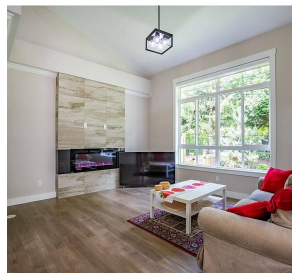
4 Bathrooms

2,385 SF

FEATURES

Year Built: 2020

Listed By: Royal First Realty



rennie