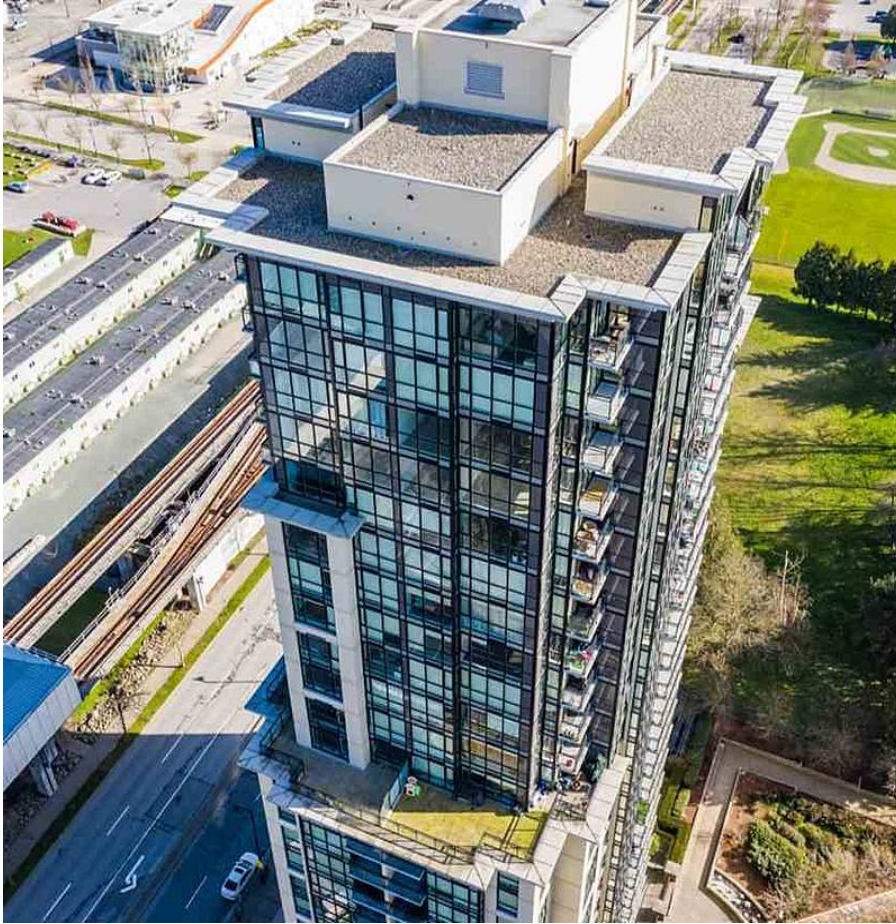


2208 10777 University Drive, Surrey

\$518,999



WELCOME to City Point! Modern & bright 2 bedroom, 2 bathroom + Den corner unit with stunning 180 degree mountain & river views! Massive windows, open concept living with recently renovated brand new laminate flooring and fresh paint. Contemporary design in kitchen featuring stainless steel appliances, brand new microwave, quartz countertop & deluxe self closing cabinets. Prime Location across from Gateway skytrain station, walking distance to SFU, Central City Mall & all major transit routes. Perfect for that first time home buyer or investor! Rentals are allowed and no age restrictions. Ready to move in so take your introductory video tour now!! This stunning view won't last.

KEY INFORMATION

MLS® R2590269

Residential Attached

Whalley

2 Bedrooms

2 Bathrooms

738 SF

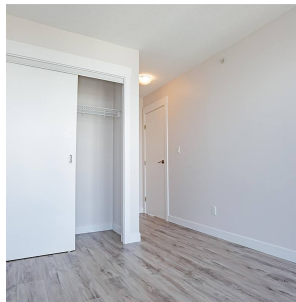
\$450.15 Maintenance Fees

FEATURES

Year Built: 2010

Views: NORTH WEST RIVER & MOUNTAIN

Listed By: rennie & associates realty ltd.



Harp Sohal
604.781.1307
hsohal@rennie.com
rennie.com/harpsohal

rennie