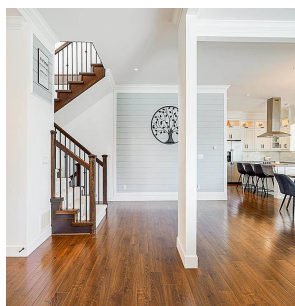
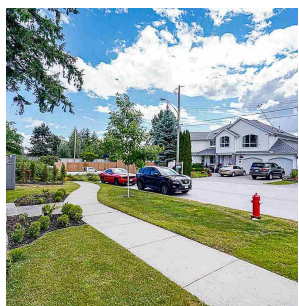
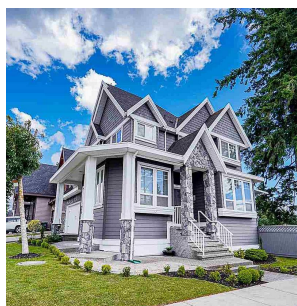
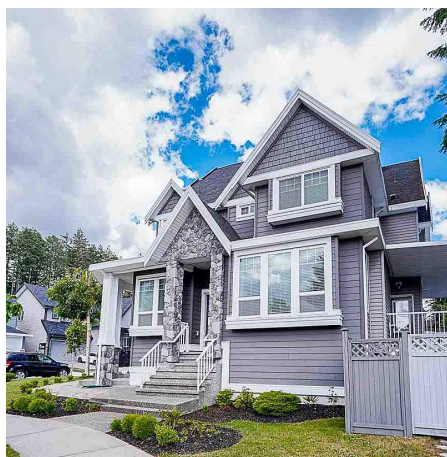
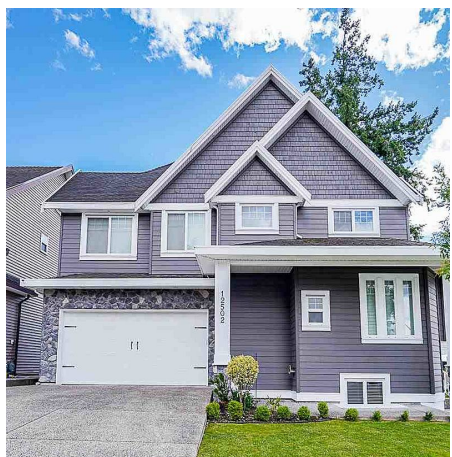
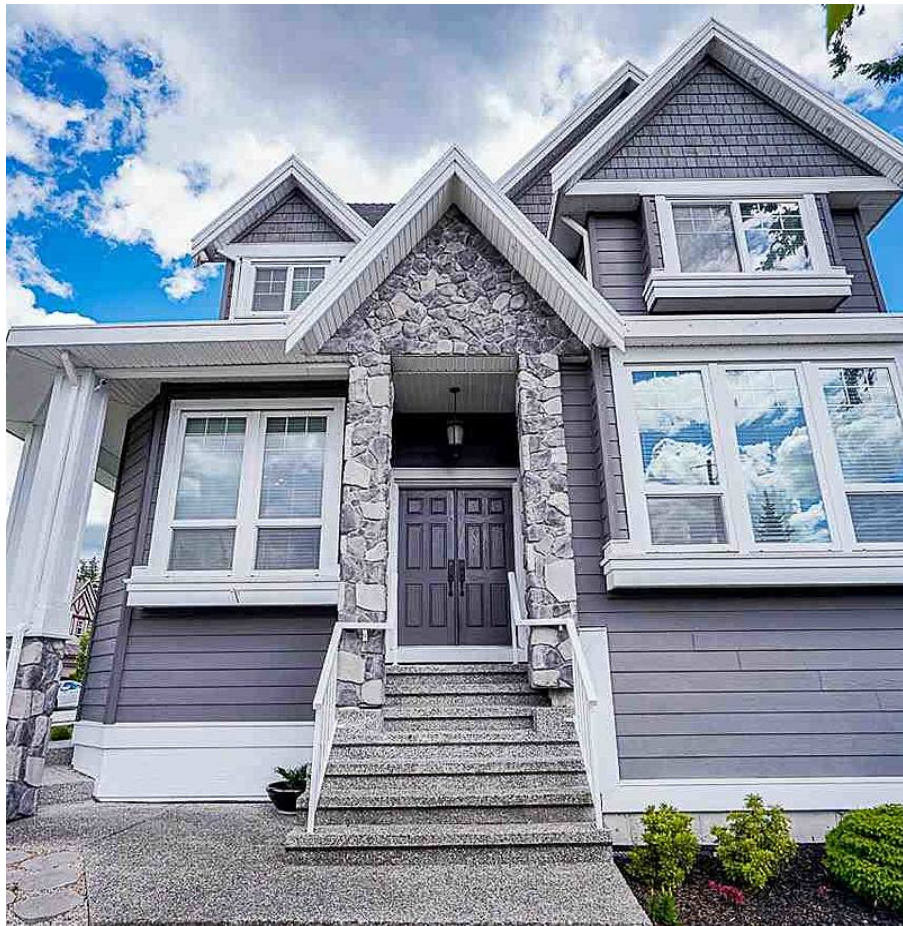


12502 58a Avenue, Surrey

\$1,548,888



Welcome to Panorama Ridge, one of the most sought out neighborhoods in Surrey. This gorgeous open concept home features 6 Bedrooms + 5 Baths, large corner lot with double garage on side. Separate parking for basement suite. Main floor features Great Room, 2 kitchens, a den & a powder room. Upstairs you have 4 Bedrooms, 3 Baths along with laundry. Plus 2 bedrooms basement suite with its own laundry. Option for 3 bedrooms suite. Finish your day in style by hanging out in the Home Theatre Room with a wet bar. Gamers will love the very secluded Home Theatre Room too. Current owners added new finishing to this already beautiful house and a brand new attached storage shed. Prime location close to all levels of schooling, playground, public transit, and nearby amenities. This will not LAST!

KEY INFORMATION

MLS® R2590463

Residential Detached

Panorama Ridge

6 Bedrooms

5 Bathrooms

3,282 SF

4,250 SF Lot

FEATURES

Year Built: 2012

Views: City

Listed By: Selmak Realty Limited

rennie