

20489 Dale Drive, Maple Ridge

\$1,000,000



This is the perfect family home. Beautifully renovated with great outdoor space on a quiet street, in a family-oriented neighbourhood. This well laid out space is just under 2100 sq ft, with 3 BDRMs & DEN/1BATH on main floor with a recently added 1 BDRM/1BATH in the inlaw suite below. The den (with window) could easily be 4th BDRM with the addition of a closet. Many updates throughout the house: kitchen, paint, flooring, backyard patio & fully fenced yard, new vinyl decking, handrails and patio door. Downstairs suite (stove was removed for bar fridge, stove plug is still there) has newer kitchen, paint and floors. Easy access to shopping, schools, entertainment, outdoor activities and mins away from WCE and GE bridge. Floor plan, Feature sheet & pictures on Realtor website.

KEY INFORMATION

MLS® R2590609

Residential Detached

Southwest Maple Ridge

4 Bedrooms

2 Bathrooms

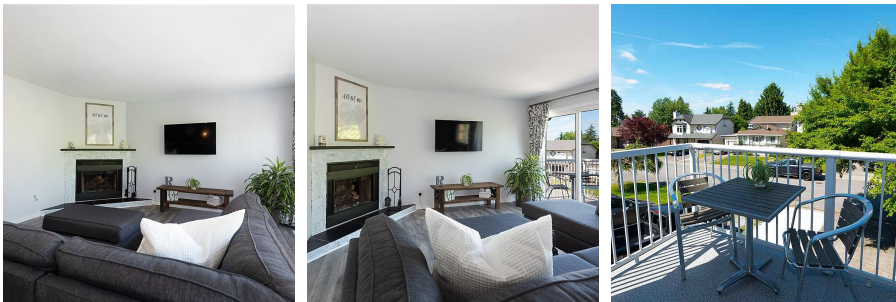
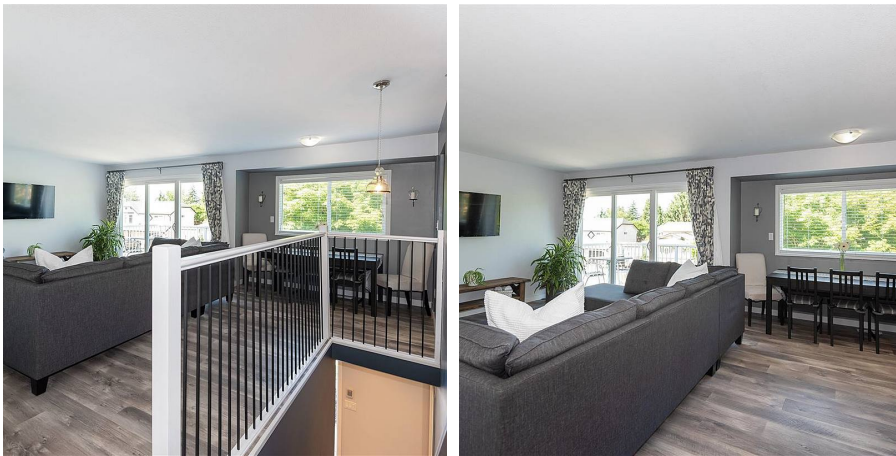
2,010 SF

3,994 SF Lot

FEATURES

Year Built: 1985

Listed By: rennie & associates realty ltd.



Harjas Panesar

778.968.8262

hpanesar@rennie.com

rennie.com/harjaspanesar

rennie